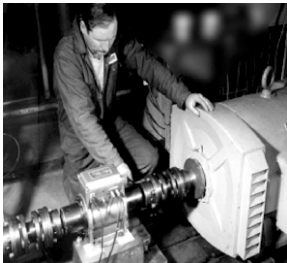


## Couplings for Back Pull-Out Pumps



# Contents

Company Profile.....	3
Coupling Selection.....	4
RRS Spacer Coupling.....	5
SWQS (T Cushion) Spacer Coupling.....	6
SWS (T Cushion) Spacer Coupling.....	7
UT / UTT Tyre Spacer Coupling.....	8
LM / LMK Metallic Disc Coupling.....	9
LM2 / LMK2 Metallic Disc Coupling.....	10
ASKS (Anti-Fling) Metallic Disc Coupling.....	11



## Tried and tested by Pump Companies Worldwide

The Aroflex® range of couplings have been tried and tested by Pump companies Worldwide, the range includes couplings to suit Water Pumps, Back Pull Out Pumps, API Specification Pumps, Fire Pumps, Screw Pumps, Sewage Pumps, Split Case Pumps, Slurry Pumps, Gear Pumps. Support from highly skilled engineers, massive stocks, fast response with the latest CNC manufacturing facilities ensures “Best fit for Purpose” selection in both performance and cost.



# COMPANY PROFILE



**Arrow Engineering Components Ltd, 72 - 74 Liverpool Street, Salford**

As an established ISO 2001:2008 certified company, Arrow Engineering Components Ltd operate a continuous improvement quality policy and management style which ensures that the company fully involves the workforce in best practices, health and safety issues, process planning and modular stock inventory programmes. With the combination of massive stocks and 24-7 multi-shift production, lead times are kept to a minimum, which include emergency manufacturing facilities for urgent breakdown requirements.

Arrow Engineering was founded in 1981 and since inception has been providing drive solutions for high volume process manufacturing companies and power transmission distributors throughout the U.K. and Europe. The Aroflex range of couplings is one of the widest ranges of couplings and torque limiters in the World. Designed to accommodate drive misalignment, absorb and withstand shock loading, with the ease of assembly and separation for efficient maintenance. This diverse range ensures the best "fit for purpose" choice by providing unbiased advice and selection of the right coupling to suit any application.



**State of the art CNC Machining Centres, Gear Cutting Machines combined with CMM Inspection with direct CAD-CAM link**

**Ex Stock "off the shelf" overnight availability for standard Couplings**



With a well equipped CNC and conventional machine shop, Arrow operate multi shift patterns to offer urgent one off manufacture of special coupling hubs, spacers, and gears. Special broaches,



slotters and key seaters are available to provide internal and external splines or simple bore and keyways. CMM Inspection ensures quality and accuracy of manufactured parts.

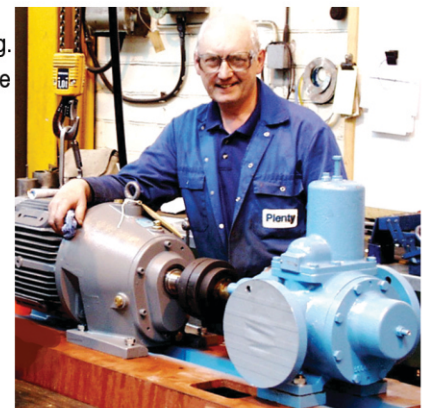


**Manufacture of Special items i.e. Non standard Spacers, Hubs, Gears. Multi Shift 24-7 Production, Emergency Manufacturing**



Selecting the right flexible coupling, you would think, is easy. Especially if it's an end user type customer, you can simply replace "like for like" product. However, if you are looking at your customers in the long-term, more thought is needed. For years manufacturers have developed and innovated different coupling types and styles for this very reason and that is why there are so many variations. There is no real science to selecting flexible couplings i.e. it is primarily two lumps of metal connecting driver and driven equipment. There are however some important factors to consider that can make a difference to the life expectancy of the drive and the efficiency / performance of the machinery they are driving. The AROFLEX range offers the best fit for purpose choice across a range of all elastomer / metallic type Couplings.

Technical support is available from staff backed with over 200 years of combined knowledge and experience in the transmission industry. Training is provided to OEM customers and distributors.



ISO9001:2008  
Cert No: CA5131



AROFLEX® is a registered trade name of Arrow Engineering Components Ltd

## COUPLING SELECTION (APPLICATION CLASSIFICATION TABLES)

PRIME MOVER	OPERATIONAL HOURS PER DAY	SERVICE FACTORS RELATED TO NATURE OF LOAD AND PRIME MOVER		
		UNIFORM	MODERATE SHOCK	HEAVY SHOCK
Electric Motor	24	1.2	1.5	2.0
	12	1.0	1.2	1.7
	8	0.9	1.1	1.6
	less than 8	0.8	1.0	1.3
Multi - Cylinder Int. Combustion Engine	24	1.5	1.7	2.2
	12	1.2	1.5	2.0
	8	1.1	1.3	1.9
	less than 8	0.9	1.2	1.6
Single cylinder Int. Combustion Engine	24	1.7	2.0	2.5
	12	1.5	1.7	2.2
	8	1.3	1.6	2.1
	less than 8	1.2	1.4	1.8

APPLICATION	NATURE LOAD			APPLICATION	NATURE LOAD		
	UNIFORM	MODERATE SHOCK	HEAVY SHOCK		UNIFORM	MODERATE SHOCK	HEAVY SHOCK
<b>AGITATORS</b>				<b>HOISTS</b>			
Pure Liquids	●			Heavy Duty			●
Liquids and Solids		●		Medium Duty		●	
Liquid - Variable Density		●		Skip		●	
<b>BLOWERS</b>				<b>LAUNDRY MACHINES</b>			
Centrifugal	●			Reversing Washers		●	
Roots		●		Tumblers		●	
<b>BREWING &amp; DISTILLING</b>				<b>MILLS</b>			
Bottling Machinery	●			Hammer			●
Can Filling Machines	●			Tumblers			●
<b>CLAY WORKING MACHINERY</b>				<b>PAPER MILLS</b>			
Brick Press			●	Bleachers	●		
Briquette Machines			●	Beater & Pulper		●	
<b>CONVEYORS</b>				Loghaul			●
Belt, Bucket or Chain	●			<b>PUMPS</b>			
Reciprocating		●		Centrifugal	●		
<b>CRANES</b>				Gear	●		
Main Hoists	●			Reciprocating (3 or more cyl.)		●	
<b>CRUSHERS</b>				Reciprocating (1 or 2 cyl.)			●
Ore and Stone			●	<b>RUBBER &amp; PLASTICS</b>			
<b>ELEVATORS</b>				Mixing Mills			●
Escalators	●			Laboratory Equipment		●	
Freight		●		Masticator			●
<b>FEEDERS</b>				<b>SCREENS</b>			
Reciprocating			●	Rotary - Stone or Gravel		●	
Screw		●		Vibrating			●
<b>FOOD INDUSTRY</b>				<b>TEXTILES</b>			
Dough Mixer		●		Cards, Dryers, Looms		●	
Grinder		●					

• Consult Arrow Engineering Components Ltd for applications not listed above.

$\text{TORQUE Nm} = \frac{30000 \times \text{kW}}{3.1416 (\text{TT}) \times \text{rpm}}$	<b>MULTIPLY</b>	<b>BY</b>	<b>TO OBTAIN</b>
	FOOT _ LBS	1.3558	NEWTON - METER (Nm)
	KILOGRAM - METER (Kg-m)	9.8066	NEWTON - METER (Nm)
	HORSEPOWER (UK)	0.746	KILOWATTS (kW)
	HORSEPOWER (METRIC)	0.7355	KILOWATTS (kW)

### GUIDE LINES FOR SELECTION

**Service Factor** : Determine service factor from application table. • **Design Power** : Multiply running power of driven machinery by the service factor. • **Coupling Size** : Refer selection chart for your required coupling so that rating is equal or greater than design power. • If speed is different than available in the charts then, torque should be calculated from the equation above and coupling should be selected with rated torque exceeding the calculated torque. • **Bore Size** : Refer related coupling dimensional table to check that the required bores can be accommodated. If not select the higher size which will accommodate the shaft size.

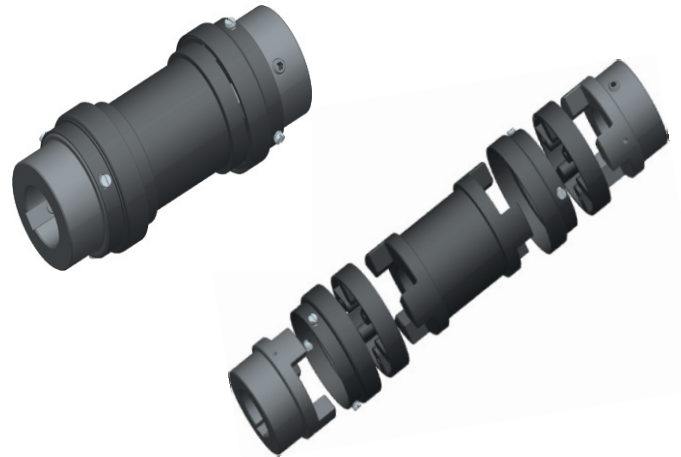
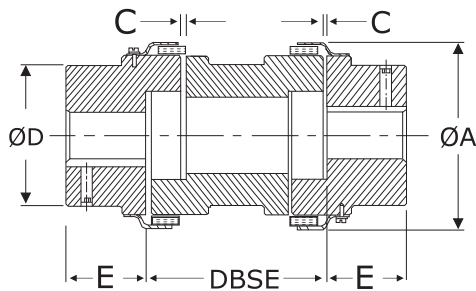
• See below alternative Insert material characteristics.

Sr. No.	Elastomer Material	Temperature Range	Chemical Resistance	Hardness available
1	Natural Rubber (NR)	-50° to 70° C	Water, moisture, alkalis	80° & 92° Shore A
2	NBR (Syn. Rubber Heat Resistant)	-40° to 100° C	Water, petro oils, Aromatic oils, dilute acids, alcohol	92° & 98° Shore A
3	EPDM (Syn. Rubber)	-50° to 125° C	Water, acids, caustics, ketones, alcohol, esters	80° Shore A
4	Polyurethane	-30° to 70° C	Dilute acids, halogenated hydrocarbons, oils	92° & 98° Shore A
5	Stainless steel	up to 500° C	Acids, petrochemicals	n. a.



# AROFLEX RRS SPACER COUPLING

Radially Removable Jaw Spacer Coupling



## FEATURES

- Specially designed for machines requiring space for maintenance
- Snap wrap design presets correct distance between hubs, using raised dimple on leg of the snap wrap
- Snap wrap are unaffected by moisture, grease and oils including non-aromatic and non-ketone solvents
- Temperatures within the range – 40°C to + 100°C
- Inspection / Replacement of snap wrap within 5 minutes and only screw driver is required
- Having 2 Snap-wrap elastomers means double flexibility
- Floating light weight aluminium spacer
- Range up to 327 Nm
- Maximum permissible misalignment: angular 2°, parallel 0.4mm, axial 3mm (initial alignment must be 25% of maximum)

## Dimensions & Technical Data

Size	Rated Torque Nm	kW Rating at			Dimensions in mm							Torsional Stiffness Nm/rad
		100 rpm	1500 rpm	3000 rpm	Min. bore	Max. bore	DBSE	ø A	ø D	E	C	
95	21.1	0.22	3.3	6.6	10	28	90,100, 135,140,180	64	49	25	2	275
100	46.4	0.49	7.35	14.7	10	35		78	57	35	2	688
110	89	0.93	13.95	27.9	15	42		96	76	43	3	1719
150	141	1.49	22.35	44.7	15	48		111	80	45	3	2120
190	190	2.01	30.15	60.3	20	60		130	102	54	3	3495
225	265	2.76	41.4	82.8	20	65		142	111	64	3	4584
226	327	3.43	51.45	102.9	25	70		153	115	70	3	6990

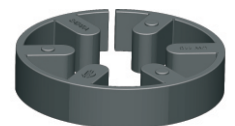
## MATERIAL SPECIFICATIONS

Spacer	Size-095-226	Aluminium	AL	BS 1490-LM 4
Hub	Size-095-225	Cast Iron	CI	DIN 1693 GG 20
Hub	Size-226	Cast Iron	CI	DIN 1693 GG 25
Snap wrap 80° Shore A	All Size	Synthetic Rubber	NBR	ASTM D 2000 BG 810
Outer ring	Size-095-226	Mild Steel	CRCA	BS 970

Alternative Snap Wrap for Higher power ratings is available on request

Snap wrap 92° Shore A	All Size	Synthetic Rubber	NBR	ASTM D 2000 BG 910	Torque 1.6 times of standard
Snap wrap 80° Shore A	All Size	Synthetic Rubber	EPDM	ASTM D 2000 AA 810	Torque as per standard
Snap wrap 92° Shore A (Yellow Colour)	All Size	Polyurethane	PU		Torque 1.8 times of standard
Snap wrap 98° Shore A (Red Colour)	All Size	Polyurethane	PU		Torque 2.5 times of standard

SW Insert  
Elastomer Options

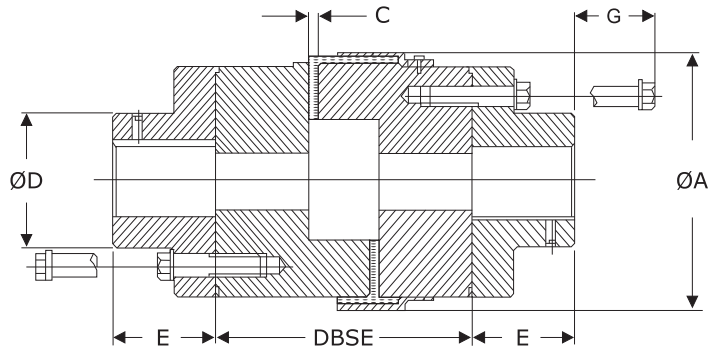


• Max speed not to exceed 3300 rpm

• Please see page 4 for elastomer temperature range

# AROFLEX SWQS SPACER COUPLING

## T Cushion Jaw Spacer Coupling



SWQS (T Cushion) Spacer Coupling

### FEATURES

- Simple construction, quick & easy installation
- T Cushion design presets correct distance between hubs, using raised dimple on legs of the T cushion
- Without disturbing the pump alignment & piping etc, maintenance is possible can also be used where quick disconnection of drive and driven units is required like compressors, generators & blowers etc
- Range up to 4308 Nm
- Maximum permissible misalignment: angular 1°, parallel 0.4 mm & axial 3 mm (initial alignment must be 25 % of maximum)

### Dimensions & Technical Data

Size	Rated Torque Nm	Kw Rating at			Dimensions in mm								Torsional Stiffness Nm / rad
		100 rpm	1500 rpm	3000 rpm	Min. bore	Max. bore	DBSE	ø A	ø D	E	C	G	
226	324	3.430	51.45	102.90	25	70	135 ,140 180,250	141.5	134	50	3	40	6990
276	532	5.600	84.00	168.00	25	75	135 ,140 180,250	161.5	135	60	3	40	12720
280	782	8.200	123.00	246.00	30	75	135 ,140 180,250	196.5	135	60	3	-	22517
295	1279	13.400	201.00	-	40	95	135 ,140 180,250	243.0	160	65	3	-	51222
2955	2132	22.400	336.00	-	50	100	135 ,140 180,250	243.0	160	65	3	-	85428
300	3047	31.900	478.50	-	50	110	135 ,140 180,250	265.0	180	80	3	-	126395
350	4308	45.000	675.00	-	50	115	135 ,140 180,250	318.0	205	90	3	-	183633

### MATERIAL SPECIFICATIONS

Jaw	Size-226-350	Cast Iron	CI	DIN 1693 GG 25
Adaptor	Size-226-350	Cast Iron	CI	DIN 1693 GG 25
T Cushion 80° Shore A	All Size	Synthetic Rubber	NBR	ASTM D2000 BG 810
Hex bolt	All Size	High Tensile	St	ISO 4014: Gr 8.8
Outer ring	Size-226-350	Mild. Steel	CRCA	BS 970



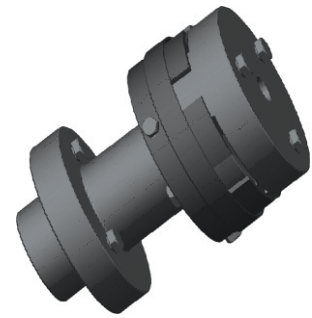
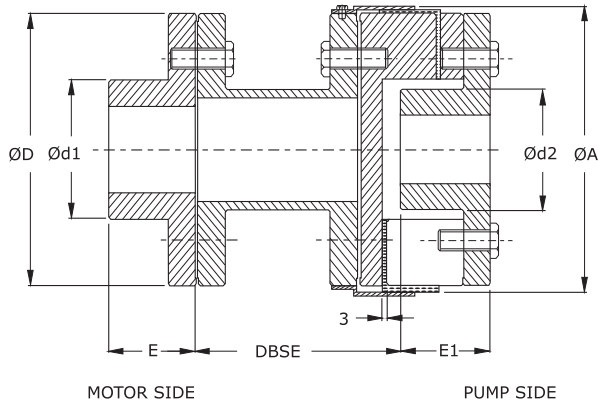
T Cushion Elastomer Options

Alternative T Cushion for higher power ratings is available on request.

T Cushion 92° Shore A	All Size	Synthetic Rubber	NBR	ASTM D2000 BG 910	Torque 1.6 times of standard
T Cushion 80° Shore A	All Size	Synthetic Rubber	EPDM	ASTM D2000 AA 810	Torque as per standard
T Cushion 92° Shore A (Yellow Colour)	All Size	Polyurethane	PU		Torque 1.8 times of standard
T Cushion 98° Shore A (Red Colour)	All Size	Polyurethane	PU		Torque 2.5 times of standard

• Max speed not to exceed surface speed  $V = 35 \text{ m / sec}$

• Please see page 4 for elastomer temperature range

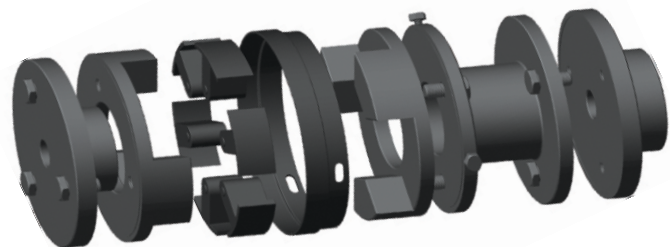


### FEATURES

- Rigid construction yet flexible
- Design made for ease in maintenance yet accommodating shaft constraints
- No down time or lost production
- No metal to metal contact
- Lubrication free
- Long life
- Maximum permissible misalignment: angular 1°, parallel 0.4 mm & axial 3 mm (initial alignment must be 25 % of maximum)

### Dimensions & Technical Data

Size	Power Rating at				Dimensions in mm										
	Synthetic Rubber		Polyurethane		Motor side Bore		Pump side Bore		DBSE	ø A	ø D	ø d1	ø d2	E	E1
	Rated Torque Nm	kW @ 100 rpm	Rated Torque Nm	kW @ 100 rpm	Min. Bore	Max. Bore	Min. Bore	Max. Bore							
276	534	5.6	802	8.4	25	75	24	42	140,180	173	154	130	70	60	60
280	783	8.2	1175	12.3	30	80	28	55		208	189	130	90	65	60
295	1280	13.4	1920	20.1	30	95	28	65		253	234	160	106	80	70
2955	2139	22.4	3209	33.6	30	105	28	70		253	234	160	106	80	75
300	3046	31.9	4570	47.9	30	105	28	75		272	251	180	122	88	80
350	4298	45.0	6446	67.5	30	115	30	80		323	302	200	130	90	90



### MATERIAL SPECIFICATIONS

Component	Size-276-350	Material	Grade	Standard
Spacer	Size-276-350	SG Iron	SG	DIN 1693 GGG 20
Hub	Size-276-350	Cast Iron	CI	DIN 1693 GG 25
Adaptor	Size-276-350	Cast Iron	CI	DIN 1693 GG 25
T cushion 80° Shore A	All Size	Synthetic Rubber	NBR	ASTM D2000 BG 810
Outer ring	Size-276-350	Mild Steel	CRCA	BS 970
Hex bolt	Size-276-350	High tensile	St	ISO 4014: Gr 8.8



T Cushion Elastomer Options

Alternative T Cushion for higher power ratings is available on request.

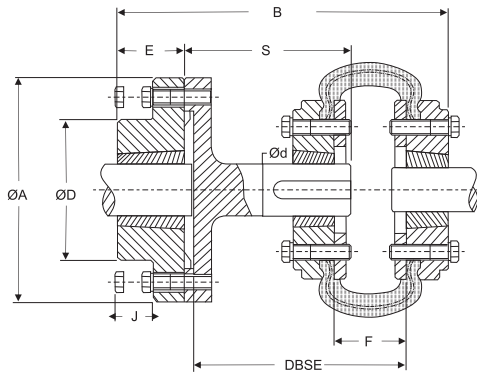
Option	Size	Material	Grade	Standard	Torque
T Cushion 92° Shore A	All Size	Synthetic Rubber	NBR	ASTM D2000 BG 910	Torque 1.6 times of standard
T Cushion 80° Shore A	All Size	Synthetic Rubber	EPDM	ASTM D2000 AA 810	Torque as per standard
T Cushion 92° Shore A (Yellow Colour)	All Size	Polyurethane	PU		Torque 1.8 times of standard
T Cushion 98° Shore A (Red Colour)	All Size	Polyurethane	PU		Torque 2.5 times of standard

• Max speed not to exceed surface speed  $V = 35 \text{ m / sec}$

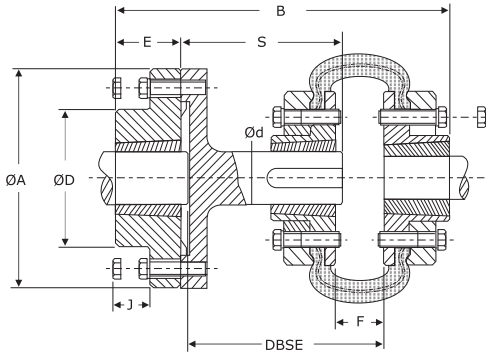
• Please see page 4 for elastomer temperature range



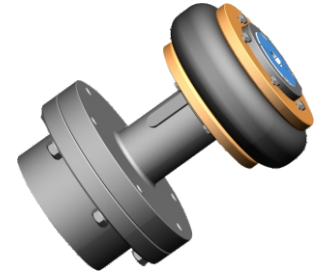
# AROFLEX UT / UTT TYRE SPACER COUPLING



Size UT 0040 - UT 0060  
Inner Clamping Ring



Size UTT 0070 - UTT 0140  
Outer Clamping Ring



## FEATURES

- Spacer makes maintenance more efficient and easy as a space between two shafts up to DBSE is available
- No requirement of re-aligning after dismantling of coupling

## Dimensions & Technical Data

Size	DBSE	Bush Size	ØA	ØD	B		E	J	S		Ød	Tyre Size UT/UTT	Bush Size	G	
					UT	UTT			UT	UTT				UT	UTT
12	80	1210	118	83	130	-	25	22	57	-	25	UT 0040	1008	21	-
	100	1210	118	83	150	-	25	22	77	-	25	UT 0040	1008	21	-
16	100	1615	127	80	163	-	38	24	94	-	32	UT 0040	1008	21	-
	140	1615	127	80	203	-	38	24	134	-	32	UT 0040	1008	21	-
	100	1615	127	80	166	-	38	24	94	-	32	UT 0050	1210	25	-
	140	1615	127	80	206	-	38	24	134	-	32	UT 0050	1210	25	-
	100	1615	127	80	166	-	38	24	94	-	32	UT 0060	1610	30	-
	140	1615	127	80	206	-	38	24	134	-	32	UT 0060	1610	30	-
25	100	2517	178	127	-	180	45	27	-	94	48	UTT 0070F	2012	-	16
	140	2517	178	127	-	220	45	27	-	134	48	UTT 0070F	2012	-	16
	180	2517	178	127	-	260	45	27	-	174	48	UTT 0070F	2012	-	16
	100	2517	178	127	-	193	45	27	-	94	48	UTT 0080F	2517	-	21
	140	2517	178	127	-	233	45	27	-	134	48	UTT 0080F	2517	-	21
	180	2517	178	127	-	273	45	27	-	174	48	UTT 0080F	2517	-	21
	140	2517	178	127	-	233	45	27	-	134	48	UTT 0090	2517	-	24
	180	2517	178	127	-	273	45	27	-	174	48	UTT 0090	2517	-	24
30	140	3030	216	146	-	270	76	33	-	134	60	UTT 0100F	3020	-	20
	180	3030	216	146	-	310	76	33	-	174	60	UTT 0100F	3020	-	20
	140	3030	216	146	-	270	76	33	-	134	60	UTT 0110	3020	-	21
	180	3030	216	146	-	310	76	33	-	174	60	UTT 0110	3020	-	21
35	140	3535	248	178	-	297	89	33	-	134	80	UTT 0120F	3525	-	25
	180	3535	248	178	-	337	89	33	-	174	80	UTT 0120F	3525	-	25
	140	3535	248	178	-	297	89	33	-	134	80	UTT 0140	3525	-	22
	180	3535	248	178	-	337	89	33	-	174	80	UTT 0140	3525	-	22

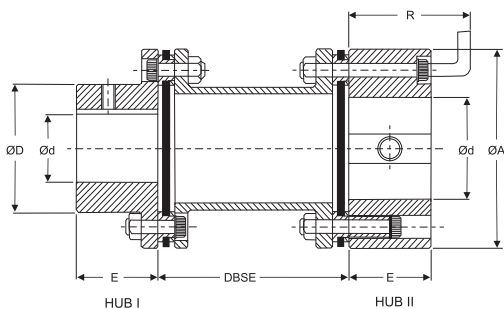
## MATERIAL SPECIFICATIONS

Component	Size	Material	Grade	Standard
Flange	Size - 0040 - 0140	Cast Iron	CI	DIN 1693 GG 20
Tyre	All Size	Natural Rubber	NR	ASTM S 2000 810
Clamping Ring	Size - 0040 - 0140	Mild Steel	St	BS 970
Spacer	Size - 0040 - 0140	Cast Steel	Cs	BS 970
Hex Bolt	Size - 0040 - 0140	High Tensile	St	ISO 4014 : Gr 8.8
Taper Bush	Size - 1008 - 3525	Cast Iron	CI	DIN 1693 GG 20

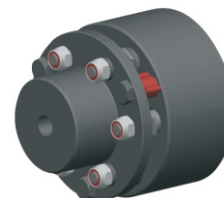
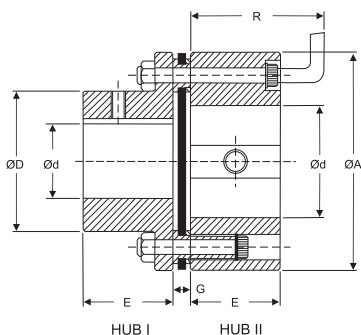


# AROFLEX LM, LMK METALLIC DISC COUPLING

LM, LMK Type I (Small Hub) & Type II (Large Hub) Metallic Disc Coupling



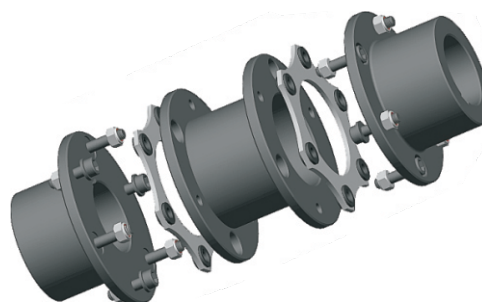
LM Metallic Disc Spacer Coupling



LMK Metallic Disc Non Spacer Coupling

## FEATURES

- Power to weight ratio high
- Accommodates angular and axial misalignments
- High temperature application
- Visual inspection is possible without dismantling equipments
- Low axial stiffness with high torsional rigidity
- High-speed capacity
- Range up to 13367 Nm
- Added advantage of stretch fitted shim pack



## Dimensions & Technical Data

Coupling Size	Torque Nm	kW at 100 rpm	Max Speed rpm	Dimension are in mm								Moment of Inertia kg.m <sup>2</sup> Approx		Tors. Stiffness / radian Approx
				Min. Bore Ø d	Max. Bore Ø d		DBSE	E	Ø A	Ø D	Min. Std. "DBSE"	Per Mtr Extra "DBSE"		
					Hub I	Hub II								
5	33	0.35	7500	8	20	22	100	25	55	30	0.0002	0.0003	0.016	
10	64	0.67	7500	10	22	25	140	30	63	35	0.0003	0.0004	0.031	
35	160	1.67	7000	12	30	38	100	40	82	45	0.0017	0.00047	0.025	
95	515	5.4	6000	17	40	50		140	45	102	57	0.004	0.001	0.04
170	860	9	5200	17	52	70	180	55	128	77	0.012	0.005	0.099	
220	1337	14	4800	22	65	80		180	60	146	94	0.036	0.008	0.176
400	2388	25	4400	27	80	100	140	70	176	115	0.070	0.0200	0.305	
520	3342	35	4200	32	90	115		180	90	197	132	0.130	0.0355	0.432
1000	5060	53	4000	42	105	130	250	95	225	147	0.240	0.0541	0.60	
1300	7161	75	3800	47	115	140	180	105	250	162	0.500	0.0700	0.80	
2000	10025	105	3700	52	120	155	250	115	275	178	0.660	0.1486	1.50	
2500	13367	140	3600	62	135	165	300	130	300	190	1.000	0.1000	1.40	

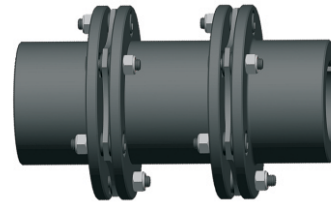
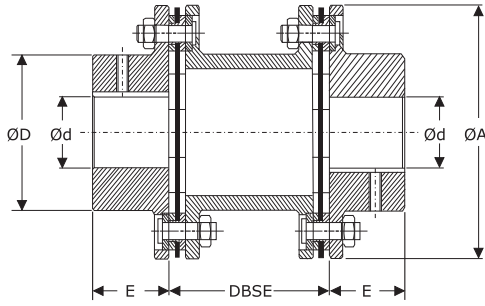
## MATERIAL SPECIFICATIONS

Part	Size	Material	Grade	Standard
Hub	Size- 5 - 2500	Steel	C 40	EN/DIN 10263-2
Spacer	Size-100 - 300	Steel	C 40	EN/DIN 10263-2
Disc Pack	Size-05 - 2500	Stainless Steel	SS	

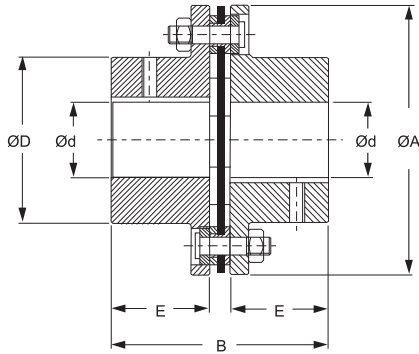


# AROFLEX LM2, LMK2 METALLIC DISC COUPLING

LM, LMK Type II (Large Hubs) Metallic Disc Coupling



Lm2 Metallic Disc Spacer Coupling



LMK2 Metallic Disc Non Spacer Coupling

## FEATURES

- Power to weight ratio high
- Accommodates angular and axial misalignments
- High temperature application
- Visual inspection is possible without dismantling equipments
- Low axial stiffness with high torsional rigidity
- High-speed capacity
- Range up to 12000 Nm
- Added advantage of stretch fitted shim pack



## Dimensions & Technical Data

Size	Rated Torque Nm	Max. Speed rpm	Max. Bore Ød	Dimensions are in mm						Torsional Stiffness Nm/radial Approx
				DBSE	E	ØA	ØD	B		
								UMK2	UMS2	
20	15	20000	20	60	20	56	32	45	100	0.017
25	30	16000	25	60	25	68	40	56	110	0.028
35	60	13000	35	70	40	82	54	86	150	0.092
38	120	12000	38	80	45	94	58	98	170	0.198
42	180	10000	42	80	45	104	68	100	170	0.282
50	330	8000	50	96	55	126	78	121	206	0.501
60	690	6700	60	96	55	138	88	121	206	0.560
70	1100	5900	70	116	65	156	102	141	246	0.900
80	1500	5100	80	136	75	179	117	164	286	1.140
85	2400	4750	85	140	80	191	123	175	300	1.520
90	4500	4300	90	140	80	210	132	175	300	1.940
105	5100	4000	105	160	90	225	147	200	340	2.540
115	9000	3400	115	170	100	265	163	223	370	3.480
135	12000	3000	135	250	135	305	184	297	520	6.850

## MATERIAL SPECIFICATIONS

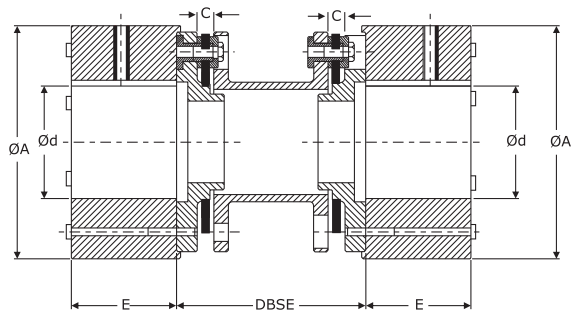
Hub	Size- 20 - 135	Steel C 40	St	EN/DIN 10263-2
Spacer	Size- 20 - 135	Steel C 40	St	EN/DIN 10263-2
Disc Pack	Size- 20 - 135	Stainless Steel	SS	



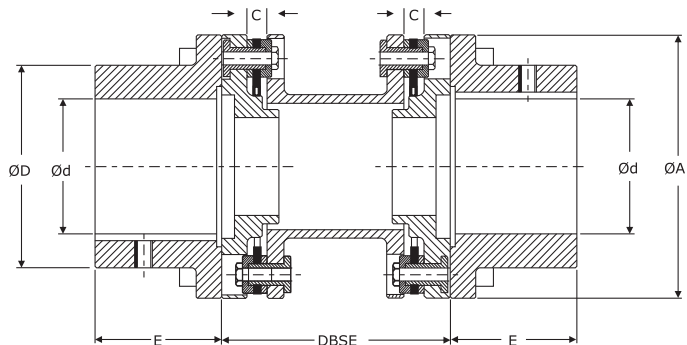


# AROFLEX ASKS (ANTI-FLING) SPACER COUPLING

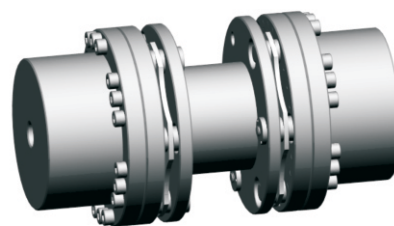
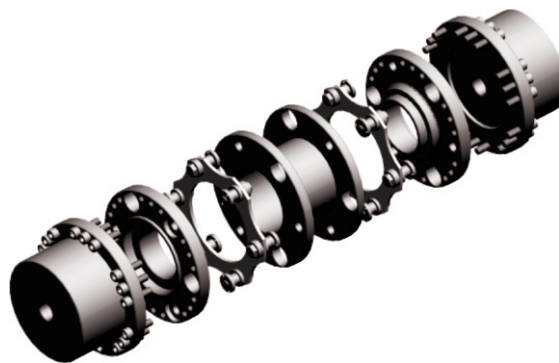
API 671 / 610 Compliant Metallic Disc Coupling



Size 35



Size 50 - 160



## FEATURES

- Series for pump drives
- Coupling in accordance with API 610, API 671
- Available with large hub for bigger bore diameters
- Spacers are supplied assembled by the manufacturer
- Finish bore according to ISO fit H7, feather key according to DIN 6885 sheet 1 - JS9

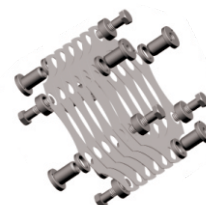
## Dimensions & Technical Data

Size	Torque Std Nm	Torque Max. Nm	Vibratory Torque kW	Dimensions are in mm									
				Max. Bore Ød	ØD	ØA	E	C	DBSE				
35	60	120	30	50	-	75	38.5	6	100	140	-	-	-
50	240	480	120	50	70	95	50	9	100	140	-	-	-
65	450	900	225	65	100	126	63	10	100	140	180	-	-
75	940	1880	470	75	105	138	62.5	10	100	140	180	-	-
85	1700	3400	850	85	120	156	72.5	12	-	140	180	200	250
110	2700	5400	1350	110	152	191	87	12	-	140	180	200	250
120	4500	9000	2250	120	165	213	102	12	-	-	180	200	250
140	9000	18000	4500	140	200	265	126	15	-	-	-	200	250
160	13000	26000	6500	160	230	305	145	15	-	-	-	-	250

## MATERIAL SPECIFICATIONS

Component	Size	Material	Grade	Standard
Hub	Size- 35 - 160	Steel	C 40	EN/DIN 10263-2
Spacer	Size- 35 - 160	Steel	C 40	EN/DIN 10263-2
Disc Pack	Size- 35 - 160	Stainless Steel	SS	

ASKS Anti Fling Disc Pack



# Arrow Engineering Components Ltd

Flexible Couplings, Anti-Vibration Mounts, Sprockets, Pulleys, Bearings, Engineering

## Flexible Couplings



Metallic Disc Couplings



Flexi-Cone,  
Pin & Bush Couplings



RB Barrel,  
Pin & Bush Couplings



SW (Snap Wrap)  
Jaw Couplings



HRC  
Jaw Couplings

## Anti-Vibration Mounts



O-Mounts / Bobbin  
Mounts



PC / PCF (Fail Safe)  
Combi-Mounts



Fan / Industrial 2 Bolt  
Flange Mounts



Rubber to Metal  
Bonded Bushes



Sandwich Mounts

## Sprockets, Pulleys & Taper Bushes



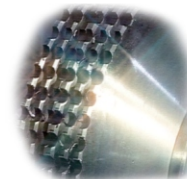
Pilot Bore Sprockets



Taper Bore Sprockets



Taper Bushes



Specials / Bespoke  
Non Standard



V-Belt Pulleys

## Bearings



Self Lube  
Housed Bearing Units



White Polymer Housed  
Stainless Steel Insert



Standard, Eccentric  
& Parallel O.D. Inserts



Pop Metric  
Bearings

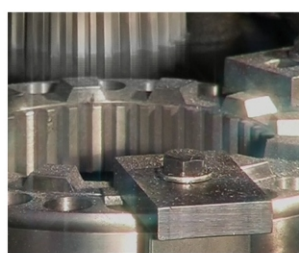


Male & Female  
Rod End Bearings

## In-House Engineering & Gear Cutting



Gear Cutting



Splining



Broaching



Key Seating



Slotting

Arrow Engineering Components Ltd / [www.Fish4Parts.co.uk](http://www.Fish4Parts.co.uk)

72 - 74 Liverpool Street, Salford, M5 4LT, Tel: 0161-737 6969, Fax: 0161-925 1570, E: [info@arrowengineering.com](mailto:info@arrowengineering.com)