

AROFLEX POLYBOND

CONTENTS

Introduction	3
'O' Mounts	4
Vibratory Road Roller Mounts	5
Waisted 'O' Mounts	6
Waisted 'O' Mounts	7
Capped 'O' Mounts	8
Rubber to Metal Bonded Bushes	9
Double 'U' Shear Mounts	10
Machinery Isolators - P40, P110, P114, P139, P140	11
Machinery Isolators - P104, P107, P204	12
PCF Type Combi Mounts	13
'P' Mounts	14
'P' Flange Mounts	15
PLO & PDM Plate Mounts	16
PC Type Combi Mounts	17
PS Type Combi Mounts	18
PCS Type Combi Mounts	19
MegaMounts	20
Shock Absorbers	21
PS Sandwich Mounts	22
Dome Shaped O Mounts, BO 80 Sandwich Mounts	23
PMF Machine Mounts & PH Type Dual Compression Mounts	24
DC & Dome Mounts	25
Cab Mounts - PO98 & P16053	26
Core Mounts - P973 & P909	27
Core Mounts - PSC1, PSC2, PSC3	28
Core Mounts - P193, P284, P665, P772	29
PM Machine Mounts	30
Machinery Pads & Buffers	31
Open Spring Mount	32
PSP Type Base Plate Spring Mount	33
PSMP Type Base Plate Spring Mount	34
Enclosed Spring Mount	35
Load Deflections	36 to 40

AROFLEX POLYBOND

INTRODUCTION

Selection of the correct mount to suit any application can be quite frustrating. That's why the vast range of Aroflex / Polybond Anti-Vibration Mounts gives you such a wide choice. We offer many types and sizes of mounts to help solve most vibration isolation requirements.

Our application engineers are also available for advice and assistance in testing / trialing products.

HOW TO SELECT THE CORRECT MOUNT ?

A quick & simple way to select the correct mount is given below:

1. Divide total weight of equipment by number of mounting points. Resulting figure will indicate load per mounting
2. Determine lowest disturbing frequency (i.e. The lowest rpm of equipment which causes vibration)
3. From the 'Isolation Table' shown alongside, find out the required deflection for your desired isolation level (we recommend 80%)
4. With this data of 'Load per mount' and required deflection, select suitable mount from this catalogue
5. Please contact our Engineering Department for additional details.

STIFFNESS IDENTIFICATION METHOD

	INCREASING STIFFNESS				
Designation	A	B	C	D	E
Colour Code	Blue	White	Green	Yellow	Red

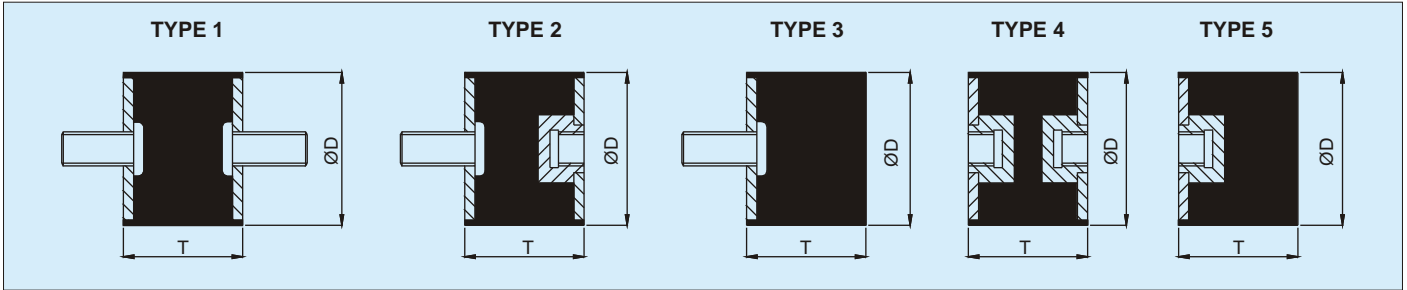
Isolation Table

Disturbing Frequency RPM	Deflection in (mm) for		
	50% Isolation	70% Isolation	80% Isolation
300	30.00	43.34	59.97
400	16.90	24.43	33.82
500	10.81	15.60	21.61
600	7.50	10.83	15.00
700	5.52	7.97	11.02
800	4.22	6.10	8.44
900	3.33	4.81	6.66
1000	2.70	3.90	5.40
1050	2.45	3.54	4.90
1100	2.23	3.22	4.46
1150	2.04	2.95	4.08
1200	1.87	2.70	3.74
1250	1.73	2.50	3.46
1300	1.60	2.30	3.19
1350	1.48	2.14	2.96
1400	1.37	1.99	2.75
1450	1.28	1.86	2.57
1500	1.19	1.73	2.40
1550	1.12	1.62	2.24
1600	1.05	1.52	2.10
1650	0.99	1.43	1.98
1700	0.93	1.34	1.86
1750	0.88	1.27	1.76
1800	0.83	1.20	1.66
1850	0.79	1.14	1.57
1900	0.74	1.08	1.49
1950	0.71	1.02	1.42
2000	0.67	0.97	1.34
2200	0.55	0.80	1.11
2400	0.46	0.67	0.93
2600	0.40	0.57	0.80
2800	0.34	0.49	0.68
3000	0.30	0.43	0.60

SOFTWARE SELECTION PACKAGE AVAILABLE ON CD

AROFLEX POLYBOND

'O' MOUNTS



SIZE / PART No. (DXT) (mm)	MAX COMPRESSIVE LOAD (kg)	STATIC DEFL (mm)	THREAD SIZE	
			BOLT	NUT
PO 13 x 13	A 4.5	1.0	3/16" BSW x 13L	3/16" BSW x 4 DEEP
PO 16 x 13	A 4.3	1.0	1/4" BSW x 19L	1/4" BSW x 4 DEEP
PO 16 x 15	A 5.6	1.0	M5 x 0.8P x 12L	M5 x 0.8P x 5 DEEP
PO 19 x 19	A 18	3.0	1/4" BSW x 19L	1/4" BSW x 6 DEEP
	B 25	3.0		
	C 35	3.0		
PO 20 x 20	C 29	4.0	M6 x 1P x 17L	M6 x 1P x 6 DEEP
PO 20 x 25	A 6.0	3.0	M6 x 1P x 17L	M6 x 1P x 6 DEEP
	B 8.0	3.0		
	C 11	3.0		
	D 18	4.0		
	E 21	3.0		
PO 25 x 19	A 16	1.5	5/16" BSW x 22L	5/16" BSW x 6 DEEP
	B 22	1.5		
	C 29	1.5		
	D 42	1.5		
PO 25 x 20	A 30	3.5	M6 x 1P x 13L	M6 x 1P x 6 DEEP
	B 45	3.5		
	C 60	3.5		
PO 25 x 22	A 50	3.5	M8 x 1.25P x 20L	M8 x 1.25P x 6 DEEP
PO 25 x 30	A 37	3.0	M8 x 1.25P x 20L	M8 x 1.25P x 6 DEEP
	B 52	3.0		
	C 73	3.0		
PO 30 x 22	A 64	3.5	M8 x 1.25P x 25L	M8 x 1.25P x 6 DEEP
PO 30 x 30	A 22	3.0	M8 x 1.25P x 21L	M8 x 1.25P x 6 DEEP
PO 35 x 22	A 64	3.0	3/8" BSW x 38L	3/8" BSW x 6 DEEP
PO 35 x 25	A 16	1.5	3/8" BSW x 38L	3/8" BSW x 6 DEEP
	B 21	1.5		
	C 40	1.5		
	D 65	1.5		
PO 38 x 25	A 70	4.0	M8 x 1.25P x 17L	M8 x 1.25P x 6 DEEP
	B 110	4.0		
	C 175	4.0		
PO 38 x 38	A 50	6.0	M8 x 1.25P x 17L	M8 x 1.25P x 10 DEEP
	B 67	6.0		
	C 85	6.0		
PO 40 x 28	B 146	4.5	M10 x 1.5P x 25L	M10 x 1.5P x 6 DEEP
PO 40 x 30	B 60	5.0	M8 x 1.25P x 25L	M8 x 1.25P x 6 DEEP
PO 40 x 40	A 43	6.0	M10 x 1.5P x 38L	M10 x 1.5P x 10 DEEP
	B 59	6.0		
	C 82	6.0		

SIZE / PART No. (DXT) (mm)	MAX COMPRESSIVE LOAD (kg)	STATIC DEFL (mm)	THREAD SIZE	
			BOLT	NUT
PO 50 x 19 B3	75	4.0	M10 x 25	-
PO 50 x 40	A 65	5.0	M10 x 1.5P x 22L	M10 x 1.5P x 12 DEEP
	B 110	5.0		
	C 150	5.0		
PO 50 x 45	A 106	7.0	M10 x 1.5P x 25L	M10 x 1.5P x 12 DEEP
PO 50 x 50	A 76	7.0	M10 x 1.5P x 22L	M10 x 1.5P x 12 DEEP
	B 100	7.0		
	C 120	7.0		
PO 55 x 38	A 58	3.0	3/8" BSW x 34L	3/8" BSW x 10 DEEP
	B 84	3.0		
	C 117	3.0		
PO 60 x 45	A 214	8.0	M10 x 1.5P x 19L	M10 x 1.5P x 10 DEEP
	B 311	8.0		
	C 453	8.0		
PO 60 x 50	A 110	6.5	M12 x 1.75P x 27L	M12 x 1.75P x 15 DEEP
	B 145	6.5		
	C 185	6.5		
PO 60 x 60	A 110	8.0	M12 x 1.75P x 27L	M12 x 1.75P x 15 DEEP
	B 150	8.0		
	C 200	8.0		
PO 63 x 36	A 115	5.0	1/2" BSW x 33L	1/2" BSW x 10 DEEP
PO 75 x 25 B3	100	3.0	M12 x 47	-
PO 75 x 55	A 158	6.0	M12 x 1.75P x 37L	M12 x 1.75P x 15 DEEP
	B 180	6.0		
	C 290	6.0		
PO 80 x 60	A 300	8.0	M12 x 1.75P x 30L	M12 x 1.75P x 20 DEEP
	B 400	8.0		
	C 520	8.0		
PO 80 x 75	A 205	10	M12 x 1.75P x 30L	M12 x 1.75P x 20 DEEP
	B 310	10		
	C 420	10		
PO 100 x 55	A 320	6.0	M16 x 2P x 43L	M16 x 2P x 20 DEEP
PO 100 x 75	A 280	10	M12 x 1.75P x 30L	M12 x 1.75P x 20 DEEP
	B 390	10		
	C 520	10		
PO 100 x 90	A 285	12	M12 x 1.75P x 30L	M12 x 1.75P x 20 DEEP
	B 400	12		
	C 540	12		
PO 115 x 100	A 380	10	M14 x 2P x 35L	M14 x 2P x 35 DEEP
	B 540	10		
	C 720	10		

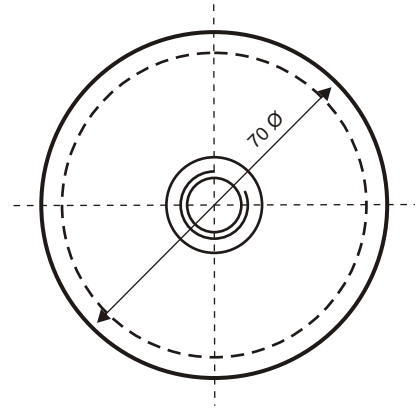
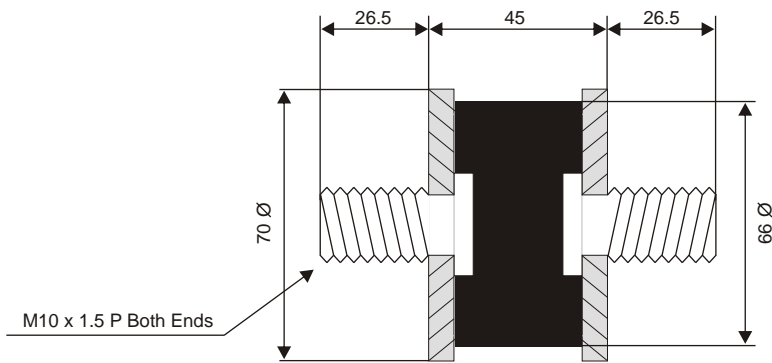
METHOD OF ORDERING

PO 38 25 A 2
D T STIFFNESS TYPE

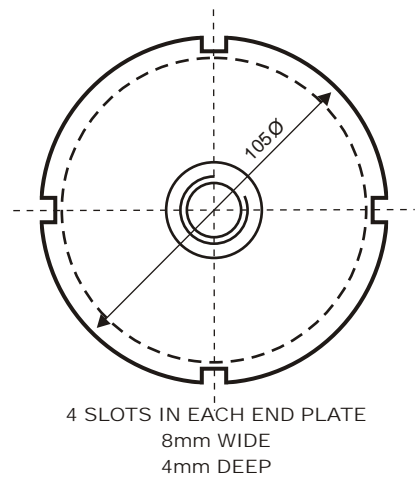
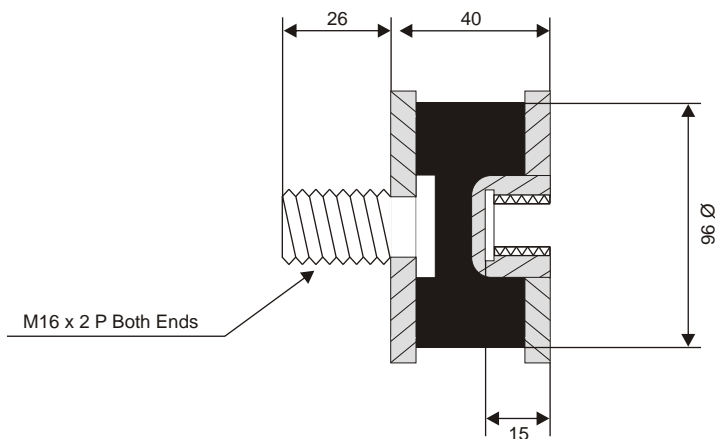
AROFLEX POLYBOND

Vibratory Road Roller Mounts

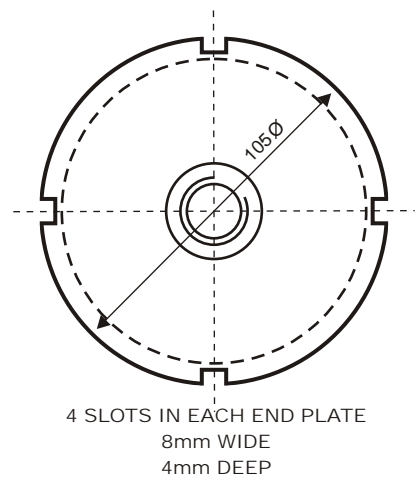
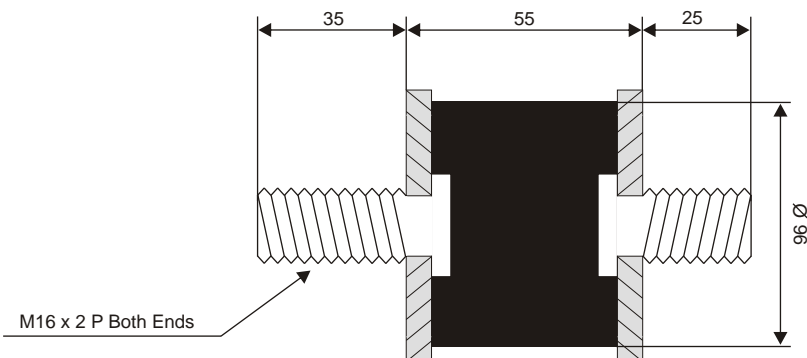
PO 70/66x45-1



PO 105x40 B2N

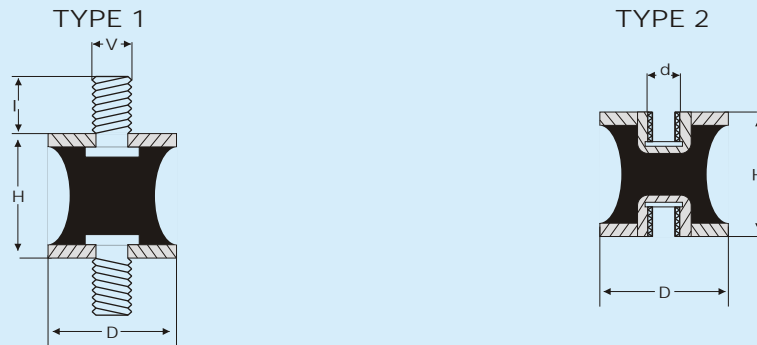


PO 105x55 B1N



AROFLEX POLYBOND

WAISTED 'O' MOUNTS



TYPE 1

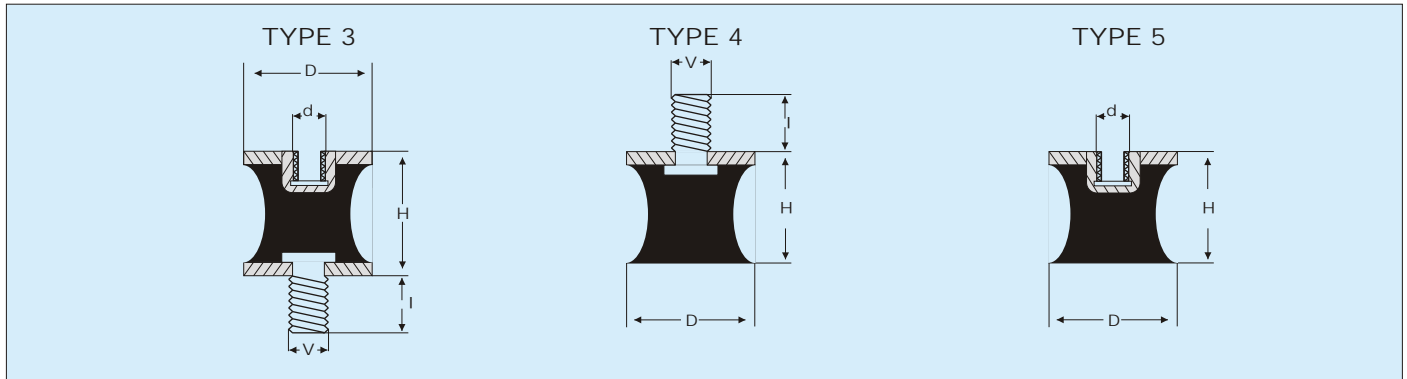
TYPE	D x H	v x l	45 IRHD	60 IRHD	70 IRHD	mm
WOM1015	10 x 15	M4 x 10	1.6	2.4	3.3	1.0
WOM1214	12 x 14	M4 x 10	2.4	3.6	5.0	1.2
WOM1214	12 x 14	M5 x 10	2.4	3.6	5.0	1.2
WOM1615	16 x 15	M5 x 10	5.8	11.1	17.2	1.7
WOM2019	20 x 19	M6 x 18	10.0	15.0	20.5	2.5
WOM2520	25 x 20	M6 x 18	8.5	12.5	17.3	3.0
WOM2520	25 x 20	M6 x 18	14.5	22.0	30.5	3.0
WOM3020	30 x 20	M8 x 20	27.0	40.5	56.0	4.0
WOM4030	40 x 30	M8 x 23	11.5	16.7	23.0	2.8
WOM4030	40 x 30	M8 x 23	35.0	52.5	72.0	5.0
WOM5537	55 x 37	M10 x 25	106.2	157.5	216.9	6.5
WOM6060	60 x 60	M10 x 25	118.0	175.0	241.0	8.5

TYPE 2

TYPE	D x H	d	45 IRHD	60 IRHD	70 IRHD	mm
WOM1015	10 x 15	M3	1.7	2.5	3.5	1.0
WOM1015	10 x 15	M4	1.7	2.5	3.5	1.0
WOM2019	20 x 19	M6	10.5	15.75	21.5	2.5
WOM2520	25 x 20	M6	15.30	23.0	32.0	3.0
WOM3020	30 x 20	M8	28.35	42.5	59.0	4.0
WOM4030	40 x 30	M8	12.0	17.5	24.0	2.8
WOM4030	40 x 30	M8	36.75	55.0	75.6	5.0
WOM6060	60 x 60	M10	124.0	184.0	253.0	8.5

AROFLEX POLYBOND

WAISTED 'O' MOUNTS



TYPE 3

TYPE	D x H	d	v x l	45 IRHD	60 IRHD	70 IRHD	mm
WOM1015	10 x 15	M4	M4 x 10	1.65	2.45	3.4	1.0
WOM2019	20 x 19	M6	M6 x 18	10.25	15.4	21.0	2.5
WOM2520	25 x 20	M6	M6 x 18	8.7	12.8	17.7	3.0
WOM2520	25 x 20	M6	M6 x 18	14.9	22.5	31.3	3.0
WOM3020	30 x 20	M8	M8 x 20	27.7	41.5	57.4	4.0
WOM4030	40 x 30	M8	M8 x 23	11.8	17.2	23.6	2.8
WOM4030	40 x 30	M8	M8 x 23	36.0	54.0	74.0	5.0
WOM6060	60 x 60	M10	M10 x 25	121.0	180.0	247.0	8.5

TYPE 4

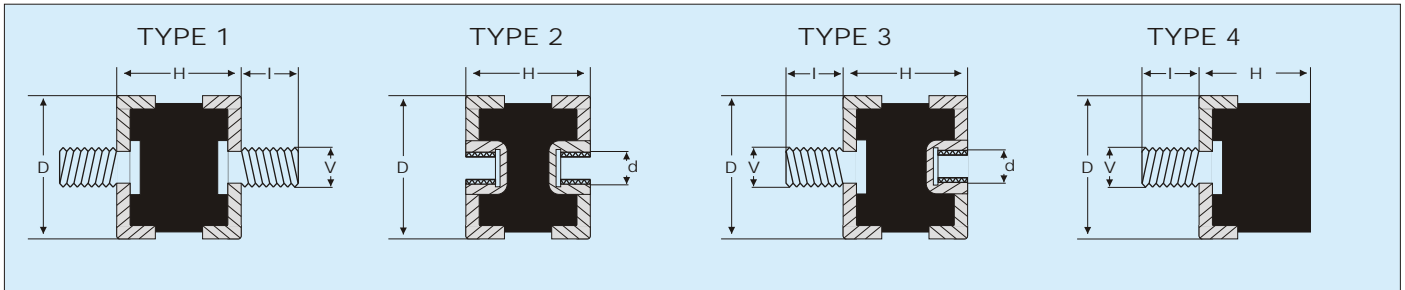
TYPE	D x H	v x l	45 IRHD	60 IRHD	70 IRHD	mm
WOM2520	25 x 20	M6 x 18	8.3	12.2	16.9	3.0
WOM2520	25 x 20	M6 x 18	14.0	21.5	29.7	3.0
WOM3020	30 x 20	M8 x 20	26.0	39.0	54.3	4.0
WOM4030	40 x 30	M8 x 23	34.0	51.0	70.0	5.0
WOM6060	60 x 60	M10 x 25	115.0	170.0	234.0	8.5

TYPE 5

TYPE	D x H	d	45 IRHD	60 IRHD	70 IRHD	mm
WOM2520	25 x 20	M6	14.2	21.7	30.0	3.0
WOM3020	30 x 20	M8	26.2	39.0	54.3	4.0
WOM4030	40 x 30	M8	34.0	51.0	70.0	5.0
WOM6060	60 x 60	M10	115.5	171.0	235.5	8.5

AROFLEX POLYBOND

CAPPED 'O' MOUNTS



TYPE 1

TYPE	D x H	v x l
COM2515	25 x 15	M6 x 10
COM2520	25 x 20	M6 x 13
COM2525	25 x 25	M6 x 10
COM3020	30 x 20	M8 x 23
COM3030	30 x 30	M8 x 23
COM4030	40 x 30	M8 x 16
COM4030	40 x 30	M8 x 23
COM5020	50 x 20	M10 x 27
COM5030	50 x 30	M10 x 27

TYPE 2

TYPE	D x H	d
COM2520	25 x 20	M6
COM4030	40 x 30	M8
COM5030	50 x 30	M10

TYPE 4

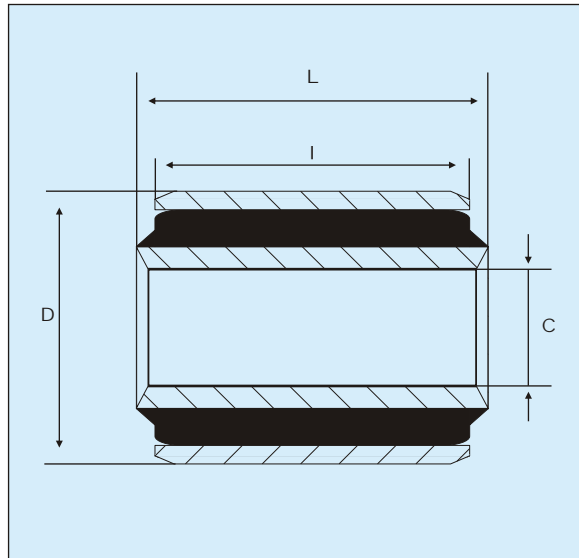
TYPE	D x H	v x l
COM2514	25 x 14	M6 x 10
COM2514	25 x 14	M6 x 18

TYPE 3

TYPE	D x H	d	v x l
COM2520	25 x 20	M6	M6 x 10
COM2520	25 x 20	M6	M6 x 13
COM3030	30 x 30	M8	M8 x 23
COM4030	40 x 30	M8	M8 x 23
COM5030	50 x 30	M10	M10 x 27

AROFLEX POLYBOND

RUBBER TO METAL BONDED BUSHES

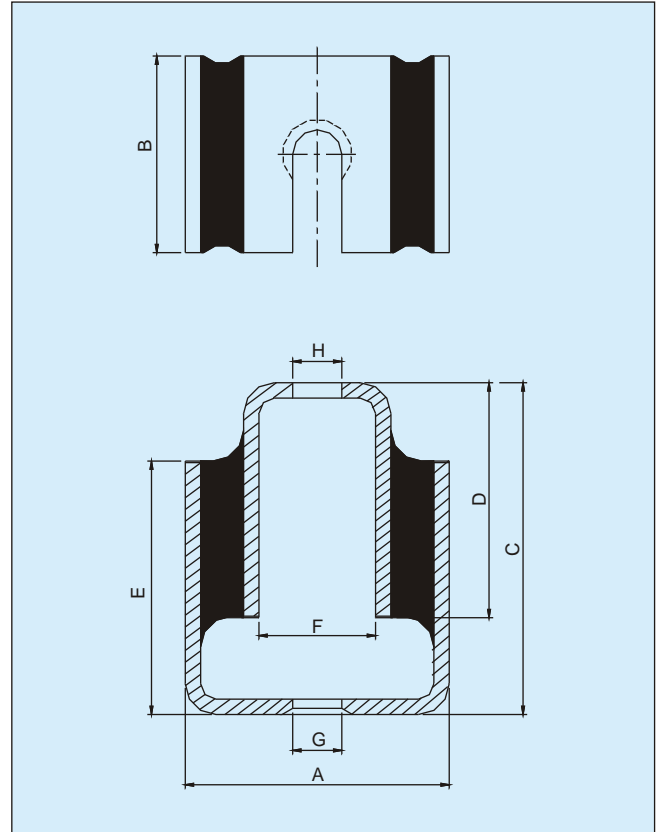


REF.	C	D	I	L
RMBB 0820.1421	08.20	20.00	14.00	21.00
RMBB 0832.3440	08.20	32.00	34.00	40.00
RMBB 1022.2023	10.00	22.00	20.00	23.00
RMBB 1024.3441	10.00	24.00	34.00	41.00
RMBB 1030.4549	10.00	30.00	45.00	49.00
RMBB 1125.5154	11.40	25.00	51.00	54.00
RMBB 1225.5054	12.00	25.00	50.00	54.00
RMBB 1226.2024	12.00	26.00	20.00	24.00
RMBB 1227.6068	12.00	27.00	60.00	68.00
RMBB 1229.2528	12.00	28.57	25.00	28.00
RMBB 1230.3444	12.00	30.00	34.00	44.00
RMBB 1232.3440	12.00	32.00	34.00	40.00
RMBB 1240.5866	12.00	40.00	58.00	66.00
RMBB 1327.3844	13.00	27.00	38.00	44.00
RMBB 1427.5056	14.00	27.00	50.00	56.00
RMBB 1430.3344	14.00	30.00	33.00	44.00
RMBB 1430.3944K	14.00	30.00	39.00	44.50
RMBB 1430.4549	14.00	30.00	45.00	49.00
RMBB 1430.6370	14.28	30.16	63.50	69.85
RMBB 1432.5054	14.00	32.00	50.00	54.00
RMBB 1432.5862	14.30	31.70	57.60	62.00

REF.	C	D	I	L
RMBB 1632.2528	16.00	32.00	25.00	28.00
RMBB 1632.2832	16.00	32.00	28.00	32.00
RMBB 1633.6066	16.00	33.00	60.00	66.00
RMBB 1635.5862	16.00	35.00	58.00	62.00
RMBB 1638.6072P	16.00	38.00	60.00	72.00
RMBB 1646.6067	16.00	46.00	60.00	67.00
RMBB 1646.6082	16.00	46.00	60.00	82.00
RMBB 1834.3236	18.00	34.00	32.00	36.00
RMBB 1842.3538	18.00	42.00	35.00	38.00
RMBB 1943.3841	19.00	43.00	38.00	41.00
RMBB 2044.3842	20.00	44.00	38.00	42.00
RMBB 2050.7581	20.00	50.40	75.20	80.60
RMBB 2050.9095	20.10	50.50	90.00	95.00
RMBB 2243.5763	22.00	42.80	57.00	63.50
RMBB 2247.7679	22.40	46.60	76.00	78.50
RMBB 2444.7779	24.00	44.50	77.00	79.50
RMBB 2450.6571	24.00	50.50	65.00	71.00
RMBB 2450.9095	24.10	50.50	90.00	95.00
RMBB 3060.5055	30.00	60.00	50.00	55.00
RMBB 3270.9095	32.00	70.00	90.00	95.00

AROFLEX POLYBOND

DOUBLE 'U' SHEAR MOUNTS



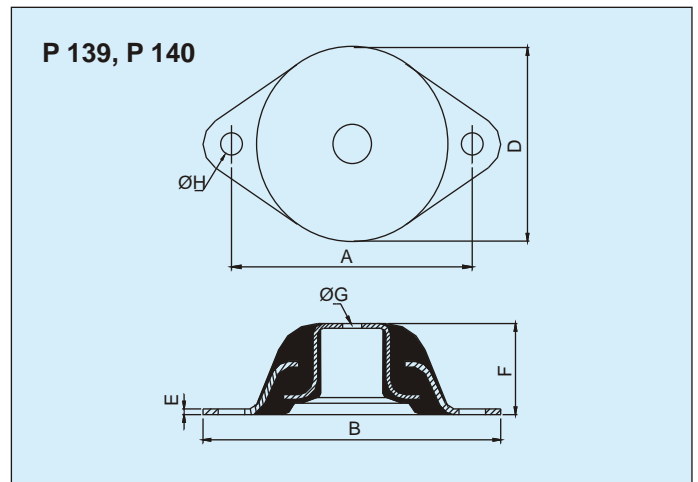
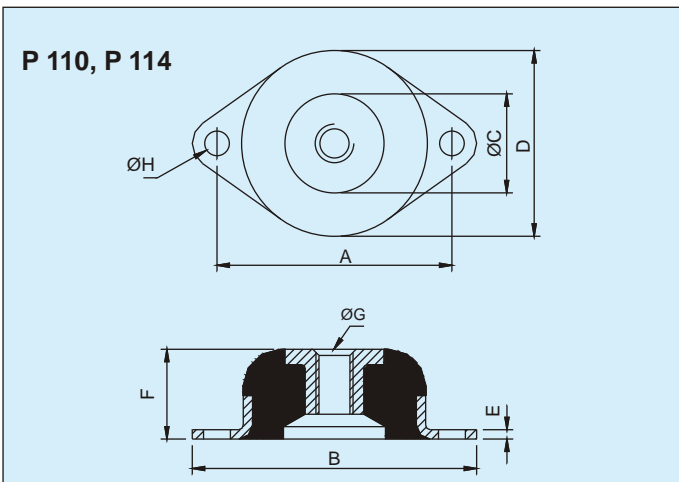
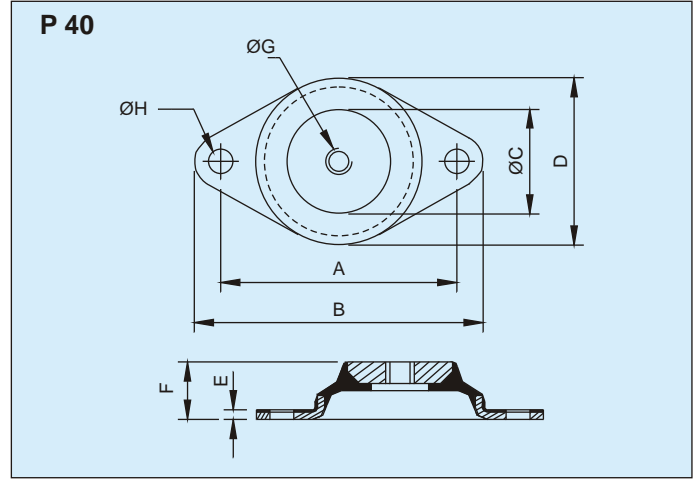
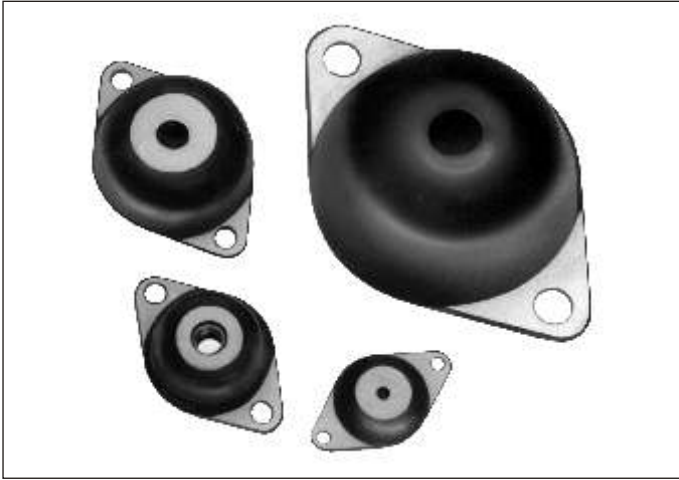
Double 'U' shear mounts feature a soft, vertical spring rate. These mounts are capable of dampening shock and vibrations in the vertical as well as lateral direction. The design incorporates built-in protection against metal - to - metal bottoming.

PART NO	DIMENSIONS (mm)								MAX. LOAD IN COMP. (kg)	DEFL (mm)
	A	B	C	D	E	F	G	H		
PU-1A									19	3
PU-1B	60	50	42	19	30	17	Ø 10 Holes	28	3	
PU-1C								52	3	
PU-2A							10 SLOT	17	8	
PU-2B	70	25	62	37	43	25		25	7	
PU-2C								28	4.5	
PU-3A							13 SLOT	72	8	
PU-3B	80	50	78	50	55	30		92	7	
PU-3C								95	4.5	
PU-4A							16 SLOT	152	8	
PU-4B	86	64	108	76	82	38		170	6	
PU-4C								205	4	

For Load Deflection Charts, Please See Page 36

AROFLEX POLYBOND

MACHINERY ISOLATORS



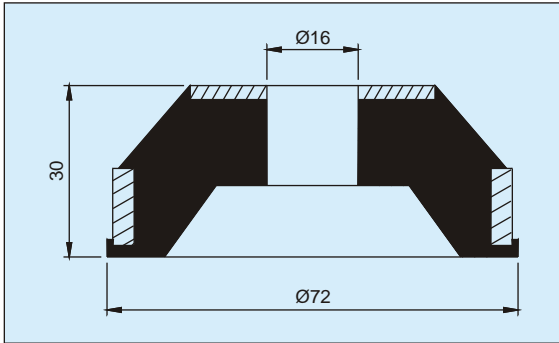
PART NO.	DIMENSIONS (mm)								MAX. LOAD IN COMPRESSION (kg)	STATIC DEFL (mm)
	A	B	C	D	E	F	OG	OH		
P 40	49.4	60	22	35	1.5	12	M6	5	45	3.0
P 110 A	60	76	41	48	3	22	7/16" UNF	8.7	40	3.7
P 110 B									55	3.5
P 110 C									85	3.5
P 114 A	76	92	59	60	3	29	1/2" UNF	8.7	60	3.6
P 114 B									90	3.6
P 114 C									130	3.5
P 139 A	127	157	-	102	3	48	O 20	14.2	550	4.6
P 139 B									725	4.5
P 139 C									900	4.4
P 140 A	110	141	-	82	2.5	41	O 13	13.5	280	4.7
P 140 B									350	4.4
P 140 C									500	4.7
P 140 D									880	4.6

For Load Deflection Charts, Please See Page 37

AROFLEX POLYBOND

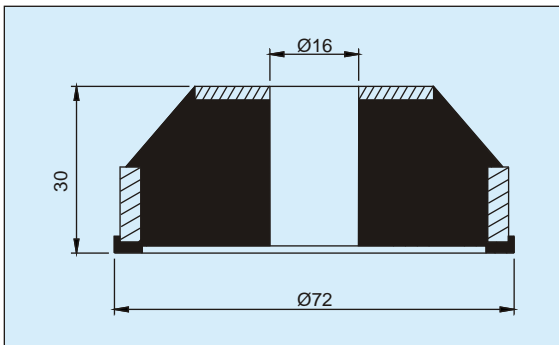
MACHINERY ISOLATORS

These isolators when used as an assembly, result in an excellent shock absorbing mounting in shear and compression



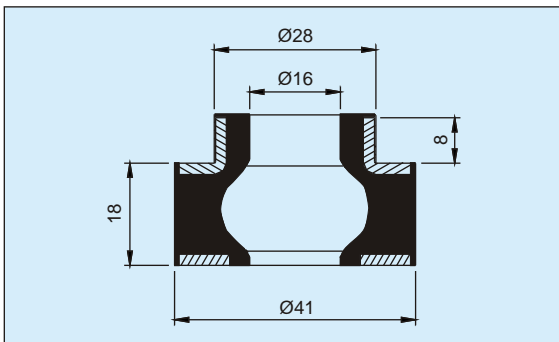
P 104

PART NO.	LOAD (kg)	DEFLECTION (mm)
P 104 A	57	4
P 104 B	90	4
P 104 C	125	4
P 104 D	180	4



P 204

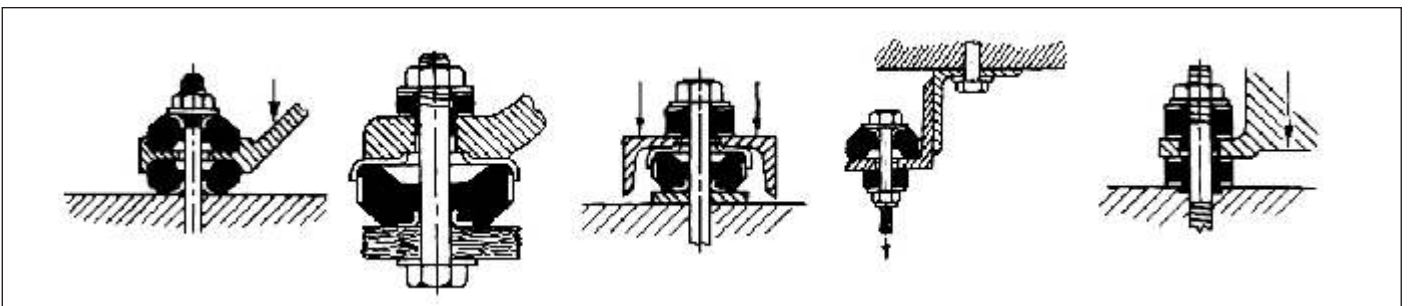
PART NO.	LOAD (kg)	DEFLECTION (mm)
P 204	270	4



P 107

PART NO.	LOAD (kg)	DEFLECTION (mm)
P 107 A	115	4
P 107 B	170	4
P 107 C	250	4
P 107 D	280	4

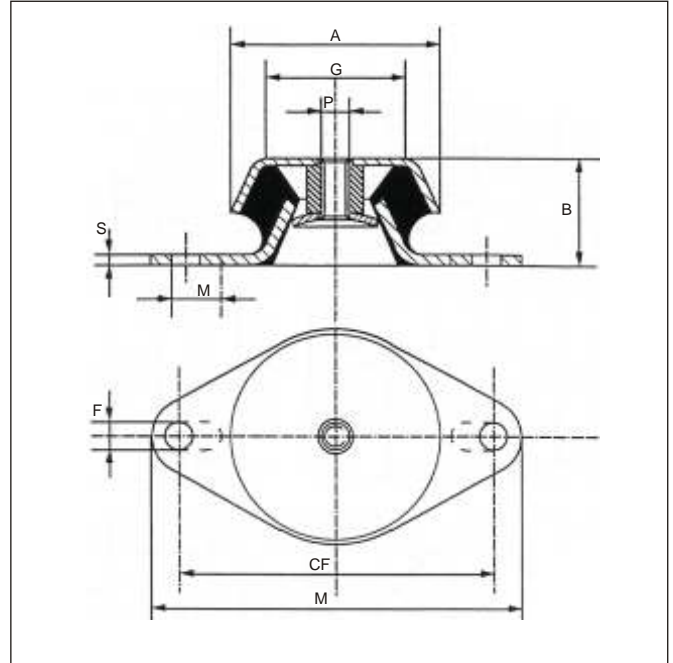
ALL DIMENSIONS IN mm.



For Load Deflection Charts, Please See Page 37

AROFLEX POLYBOND

PCF MOUNT



TYPE	CF Bolt Hole Cnts.	F(xM)	A	B	P	G	L	S
PCF603510	75 - 90 (ELONGATED)	8.3 x 16.0	60	35	M10	38	106	2
PCF603512	75 - 90 (ELONGATED)	8.3 x 16.0	60	35	M12	38	106	2
PCF623110	75 - 90 (ELONGATED)	8.3 x 16.0	60	31	M10	50	106	3
PCF623112	75 - 90 (ELONGATED)	8.3 x 16.0	60	31	M12	50	106	3
PCF773010	110.0	9	77	30	M10	59	128	2
PCF823510	110.0	11	82	35	M10	60	128	2
PCF924512	110.0	11	92	45	M12	74	128	3
PCF933510	124.0	10	93	35	M10	70	144	3
PCF1063812	138 - 146 (ELONGATED)	14.0 X 18.0	106	38	M12	81	172	3
PCF1063816	138 - 146 (ELONGATED)	14.0 X 18.0	106	38	M16	81	172	3
PCF1085014/5	160.0	17	108	50	M14	83	190	5
PCF1085016/5	160.0	17	108	50	M16	83	190	5
PCF1085016/6	150.0	17	108	50	M16	83	180	6
PCF1214216	158.0	14	121	42	M16	92	188	3
PCF1444816	179 - 186 (ELONGATED)	14.0 X 18.0	144	48	M16	121	216	4

AROFLEX POLYBOND

'P' MOUNTS

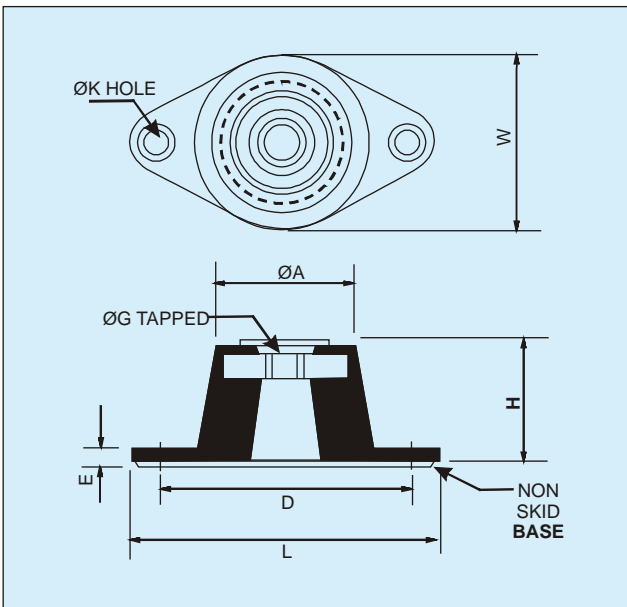


APPLICATION

- For effective isolation of noise and vibration from rotating equipment with speeds of 1000 RPM and above.
- Typically used to isolate fans, pumps, generators, air-conditioning units and general machinery.

FEATURES

- Static deflection ranges from 5 to 12 mm.
- Colour coded load range.
- Threaded top.
- Non-skid ribbed base.



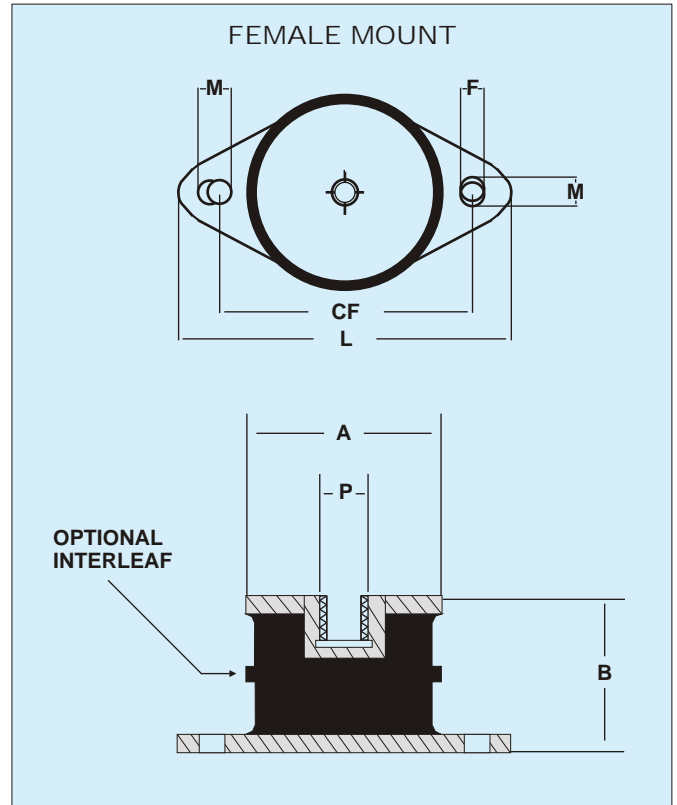
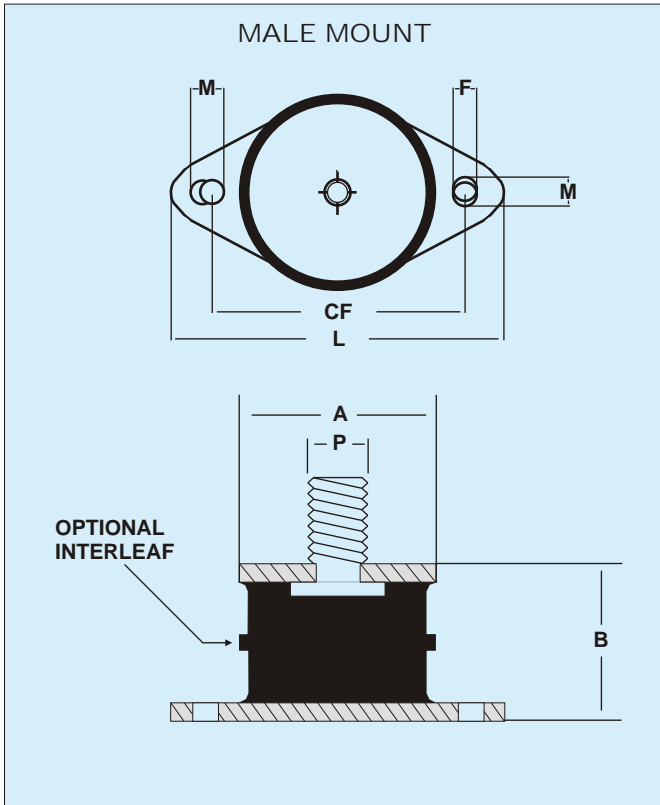
PART NO.	COLOUR CODE	MAX LOAD (kg)	STATIC DEFL. (mm)
P - 1A	BLUE	15	5
P - 1B	WHITE	25	
P - 1C	GREEN	40	
P - 1D	YELLOW	60	
PD - 1A	BLUE	15	10
PD - 1B	WHITE	25	
PD - 1C	GREEN	40	
PD - 1D	YELLOW	60	
P - 2A	BLUE	60	6
P - 2B	WHITE	75	
P - 2C	GREEN	110	
P - 2D	YELLOW	175	
PD - 2A	BLUE	60	12
PD - 2B	WHITE	75	
PD - 2C	GREEN	110	
PD - 2D	YELLOW	175	
P - 3B	WHITE	115	6
P - 3C	GREEN	240	
P - 3D	YELLOW	340	
P - 3E	RED	500	
PD - 3B	WHITE	115	12
PD - 3C	GREEN	240	
PD - 3D	YELLOW	340	
PD - 3E	RED	500	
P - 4B	WHITE	680	6
P - 4C	GREEN	1020	
P - 4D	YELLOW	1360	
P - 4E	RED	1800	
PD - 4B	WHITE	680	12
PD - 4C	GREEN	1020	
PD - 4D	YELLOW	1360	
PD - 4E	RED	1800	

PART NO.	DIMENSIONS (mm)							
	H	L	W	D	ØA	ØG	ØK	E
P - 1	28	80	45	60	32	M8	8.5	5
P - 2	30	98	60	76	45	M10	8.5	6
P - 3	44	140	85	104	64	M12	14	6
P - 4	45	165	110	127	100	M12	14	6
PD - 1	35	80	45	60	32	M8	8.5	5
PD - 2	44	98	60	76	45	M10	8.5	6
PD - 3	72	140	85	104	64	M12	14	6
PD - 4	75	165	110	127	100	M12	14	6

For Load Deflection Charts, Please See Page 38

AROFLEX POLYBOND

P FLANGE MOUNTS

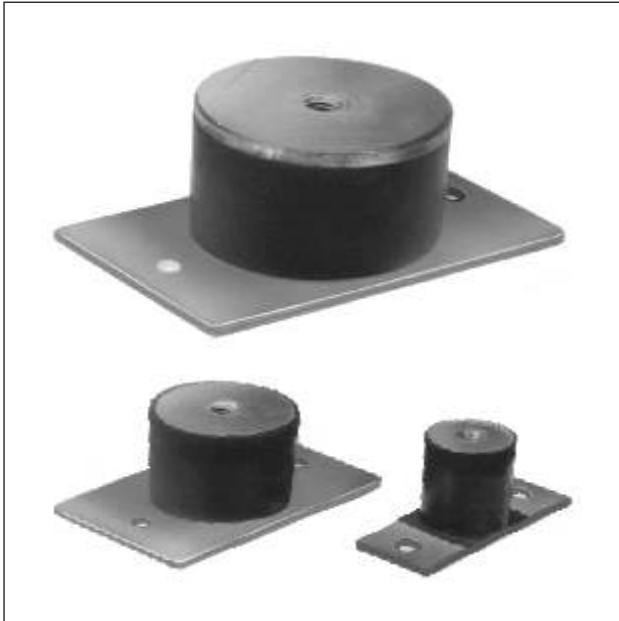


REF.	A	B	L	CF	S	P	F	M	MIN LOAD (daN)	MAX LOAD (daN)
P5 F	88	48	144	112	3	M12	11	11	70	700
P5 M	88	48	144	112	3	M12 X 38	11	11	70	700
P6 F	124	64	215	180	4	M20	18	23	150	2000
P6 M	124	64	215	180	4	M20 X 44	18	23	150	2000

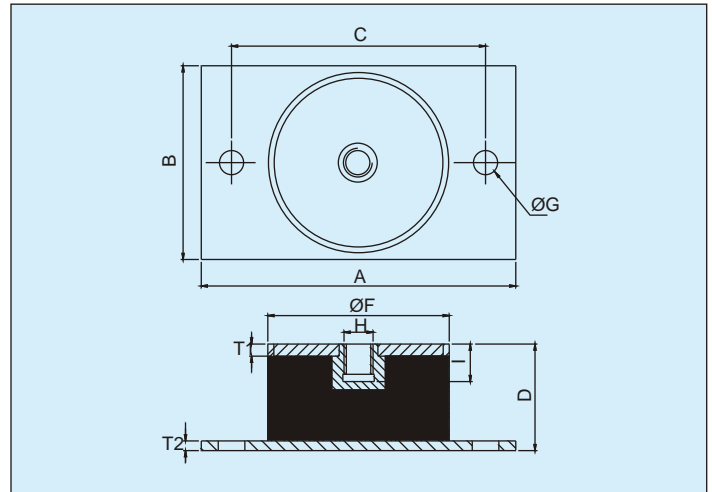
Please note: F = Female & M = Male

AROFLEX POLYBOND

PLATE MOUNTS



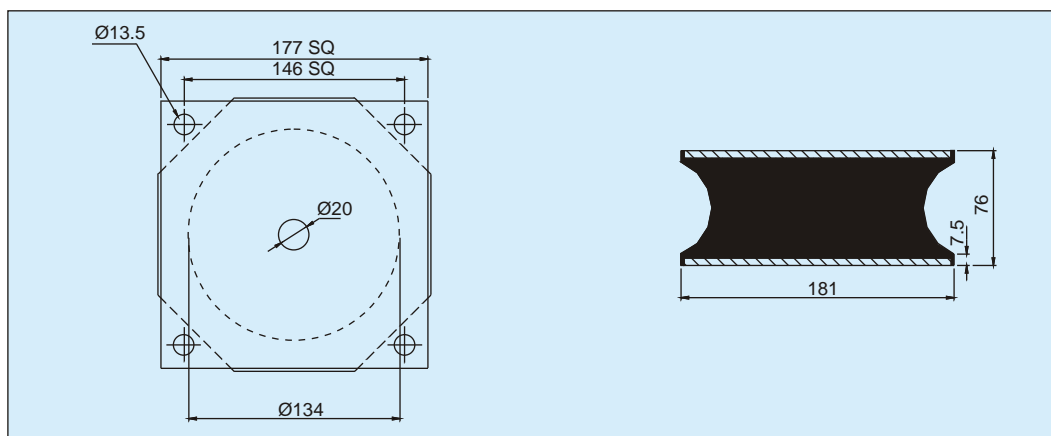
TYPE PLO



PART NO.	DIMENSIONS (mm)									
	A	B	C	D	OF	OG	H	I	T1	T2
PLO 25	80	30	60	33	25	9	M6	6.5	1.5	3.0
PLO 35	80	30	60	33	30	9	M8	7.0	1.5	3.0
PLO 50	100	60	75	33	50	9	M10	10.0	3.0	3.0
PLO 75	130	80	105	44	75	11	M12	12.5	5.0	4.0

Orders to be specified on hardness

TYPE PDM



PART NO.	COMPRESSION LOAD (kg)	SHEAR LOAD (kg)	DEFLECTION (mm)
PDM 211	2800	330	12

All DIMENSIONS IN mm.

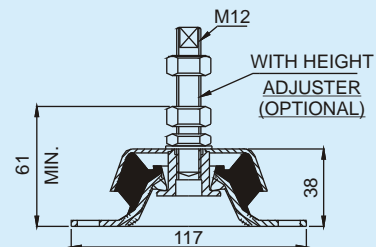
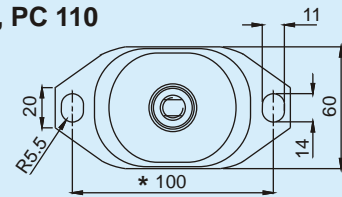
AROFLEX POLYBOND

PC TYPE COMBI MOUNTS



COMBIMOUNTS PC are suitable for a wide variety of equipment. The COMBIMOUNT PC, is low in profile, compact in size and ideal for mobile application due to added "Fail safe" feature. These mounts can be supplied with a height adjustment feature if required.

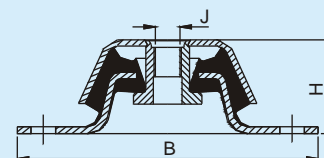
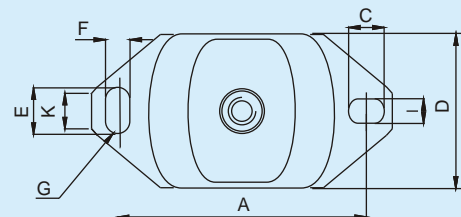
PC 100, PC 110



* PC 110 = Bolt Holes Centres = 110mm, Bolt Size = 10mm

PART NO.		LOAD (kg)	DEFLECTION (mm)
PC 100 PC 110	A	50	4
	B	70	
	C	100	
PC 140	A	135	5
	B	200	
	C	300	
PC 182	A	355	5
	B	530	
	C	800	
	D	1000	

PC140, PC182



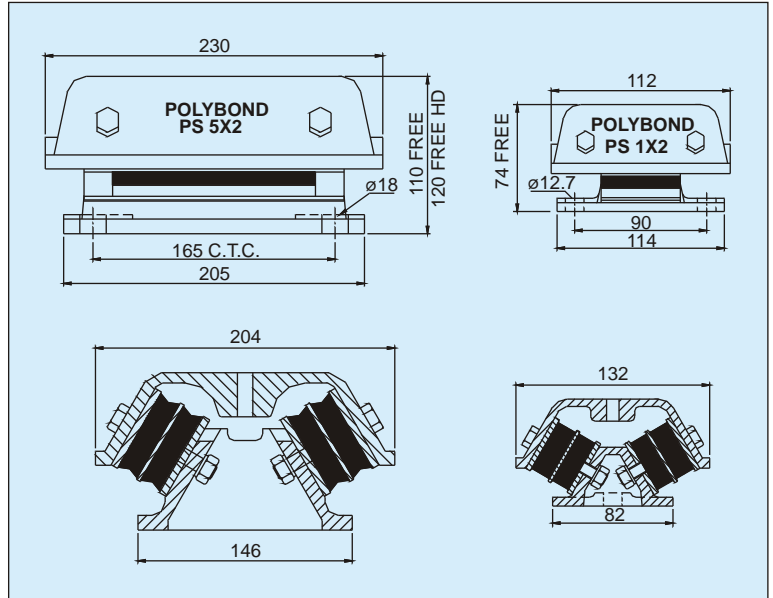
ALL DIMENSIONS IN mm.

PART NO.	DIMENSIONS (mm)										
	A	B	C	D	E	F	G	H	I	J	K
PC 140	140	178	20	76	30	13	6.5	49	13	M16	25
PC 182	182	220	26	112	34	18	9.0	70	18	M20	28

For Load Deflection Charts, Please See Page 39

AROFLEX POLYBOND

PS TYPE COMBI MOUNTS



Polybond COMBI MOUNTS PS consist of two PS type sandwich mounts housed together in specially designed iron castings for protection against oil and mechanical damage. These are special mountings with natural frequencies down to 5.5 Hz and very good lateral stability. For low disturbing frequencies, high deflection can be achieved by screwing two COMBI MOUNTS PS together along the flange. When they cannot be bolted, these mounts can be located by rubber friction pads.

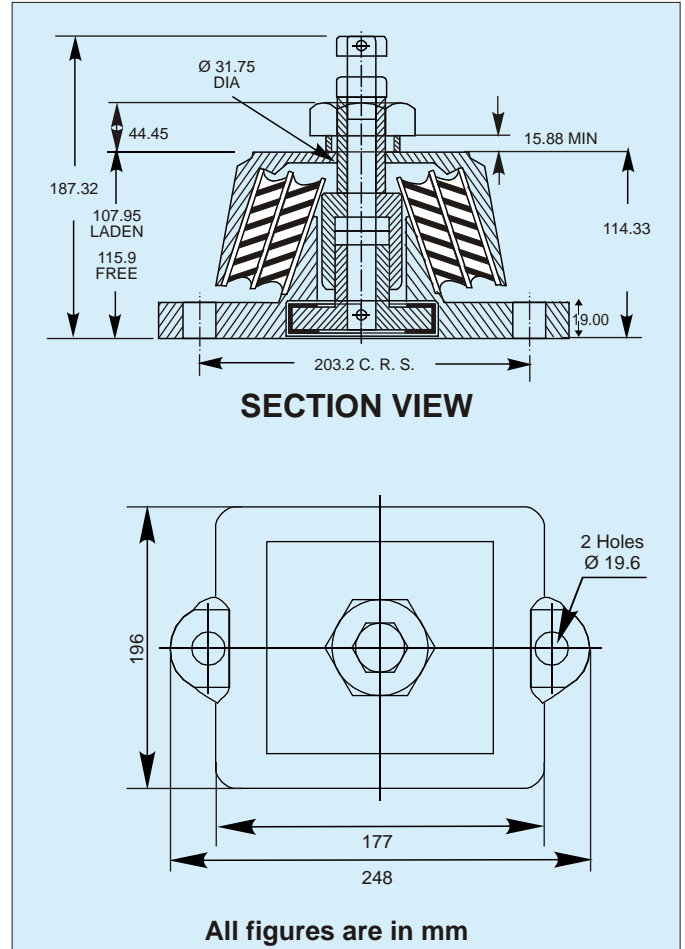
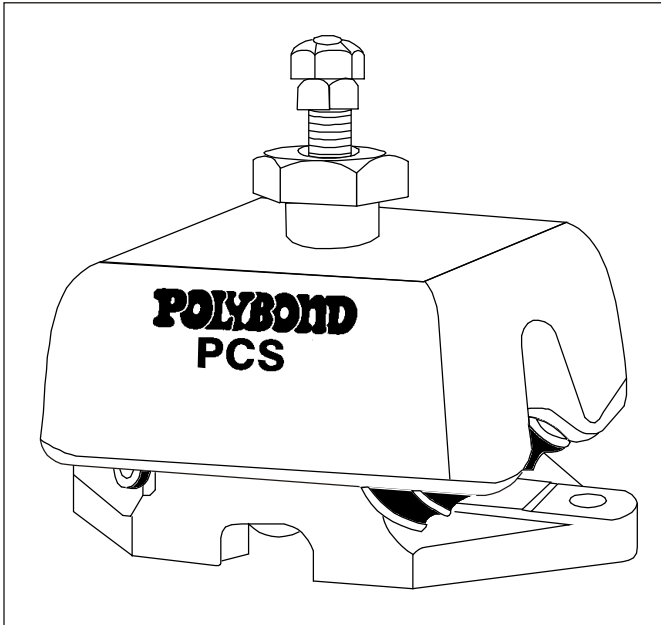
ALL DIMENSIONS IN mm.

PART NO.	COLOUR CODE	MAX. LOAD CAPACITY (kg)	DEFLECTION (mm)	TOP FIXING HOLE	
				PLAIN	TAPED
PS1 x 2A	BLUE	77	5.6		
PS1 x 2B	WHITE	118	5.8		
PS1 x 2C	GREEN	153	6.1	10	M12
PS1 x 2D	YELLOW	235	5.8		
PS1 x 2E	RED	317	5.3		
PS5 x 2A	BLUE	272	6.3		
PS5 x 2B	WHITE	544	5.6		
PS5 x 2C	GREEN	850	5.6	13	M16
PS5 x 2D	YELLOW	1040	5.6		
PS5 x 2E	RED	1580	5.6		
PS - HD A	BLUE	630	16		
PS - HD B	WHITE	990	16	13	M16
PS - HD C	GREEN	1280	16		

For Load Deflection Charts, Please See Page 39

AROFLEX POLYBOND

PCS TYPE COMBI MOUNTS



The Polybond 'PCS' mounting is designed for the lightweight, four-cycle, and high speed, multi-cylinder engine.

No more than 108 mm in height when under load, the Polybond 'PCS' is a compact unit taking up little room in relation to its capacity. The maximum vertical deflection of 10.3 mm under the load of 1600 kgs provides sufficient flexibility to isolate vibrations from the various types of engines for which the mounting has been designed. Shunting shock loads up to 5 g can be accommodated.

The ratios in transverse, vertical and longitudinal stiffnesses are in the order of 1:3:17 and have been carefully selected to give best results.

It is advisable to obtain a detailed drawing before ordering.

Load Deflection	0.4 - 1.6 Tonnes
Vertical Deflection	6.35 - 10.31 mm

AROFLEX POLYBOND

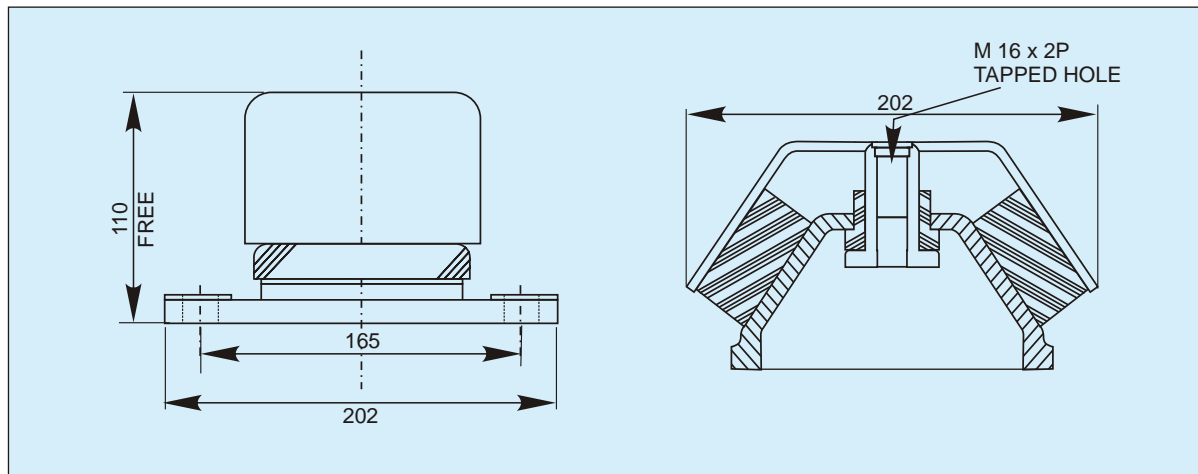
MEGA MOUNTS



POLYBOND introduces a new generation Anti-Vibration and Shock Mount, the MEGA MOUNT series with enhanced features.

FEATURES:

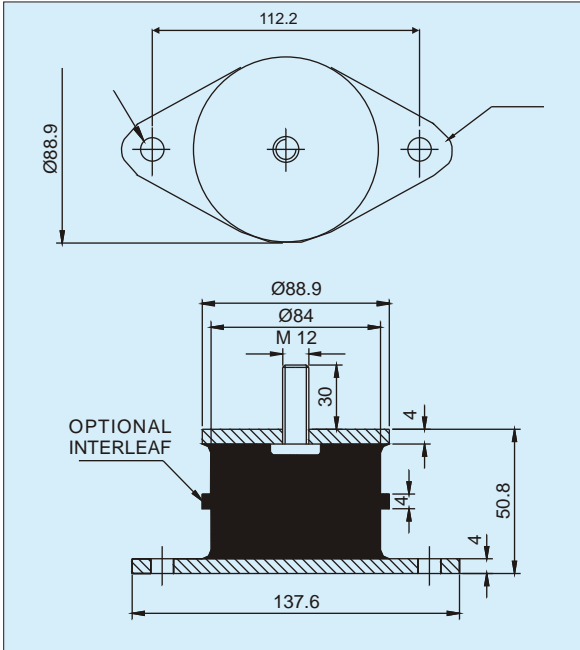
- An assembly with no bolted joints
- Additional snubbing rubber element at the centre provides cushioning in case of upward thrusts/forces
- Patented 'fail-safe' design makes it suitable for mobile application
- Bush at the centre restricts excessive movements/deflection in horizontal plane.



TYPE	MAX VERTICAL LOAD IN Kg	DEFLECTION IN mm.
MEGAMOUNT A	250	5.6
MEGAMOUNT B	400	5.6
MEGAMOUNT C	500	5.6
MEGAMOUNT D	1050	5.6

AROFLEX POLYBOND

SHOCK ABSORBER

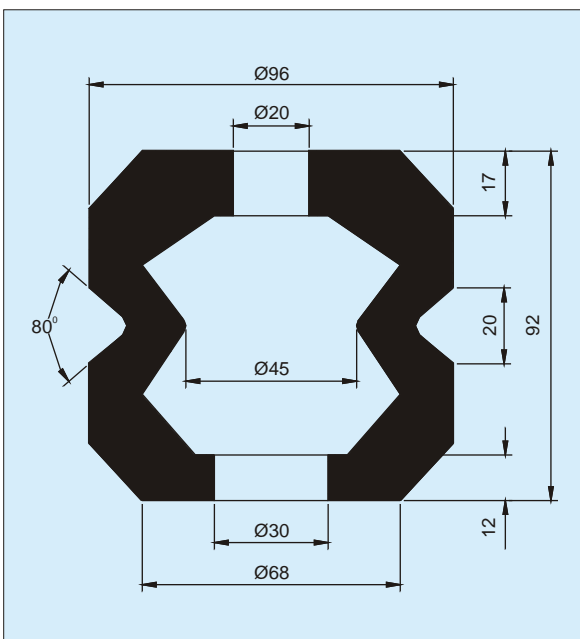


This mount can be effectively used as a shock absorber in compression or shear. It can be used in a variety of applications, including vibratory rollers. By using the interleaf effective increase in load-carrying capacity may be achieved.

ALL DIMENSIONS IN mm.

PART NO.		MAX. LOAD (kg)	STATIC DEFL (mm)	CONSTRUCTION
P-5351	A	400	4.0	WITH INTERLEAF
	B	700	3.6	
P-6351	A	200	4.1	WITHOUT INTERLEAF
	B	400	4.1	

RUBBER SPRING MOUNT



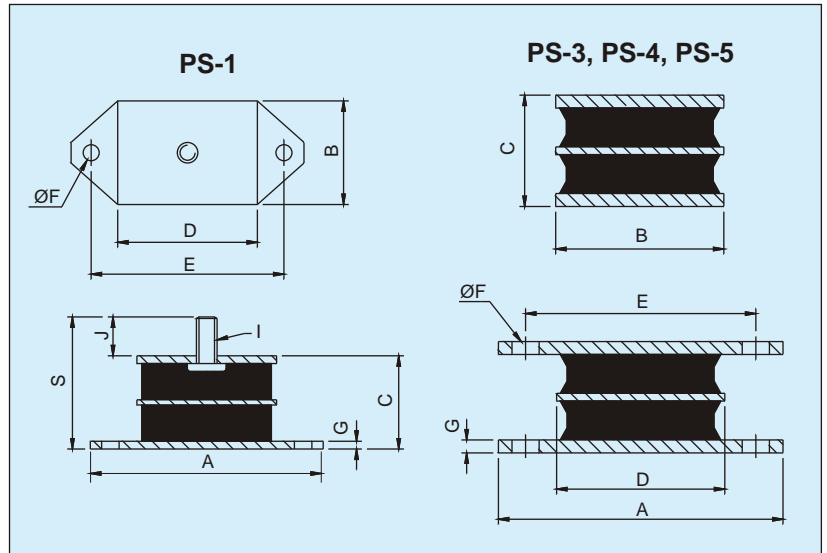
These all-rubber spring mounts have high deflection properties and can be used in low frequency applications such as vibrators, conveyors, compressors. They can also be used as a part of automobile suspension systems.

ALL DIMENSIONS IN mm.

PART NO.	AXIAL LOAD (kg)	DEFLECTION (mm)
PRS-4A	200	15

AROFLEX POLYBOND

SANDWICH MOUNTS



SANDWICH mounts are designed to support heavy or sensitive equipment and isolate intermittent or continuous vibrations. These mounts can be loaded by compression, by shear or by combination of the two. The easy-to-install SANDWICH mounts result in longer service life, smoother operation and reduced maintenance.

PART NO.	DIMENSIONS (mm)										MAX. LOAD IN COMPRESSION (kg)	STATIC DEFL (mm)
	A	B	C	D	E	OF	G	S	I	J		
PS - 1A											95	2.8
PS - 1B											135	2.8
PS - 1C	90	40	36	54	74.5	6.75	3.5	51	M8	15	200	2.8
PS - 1D											310	2.8
PS - 1E											350	2.4

PART NO.	DIMENSIONS (mm)							MAX. LOAD IN COMPRESSION (kg)	STATIC DEFL (mm)
	A	B	C	D	E	ØF	G		
PS - 3A								140	3.0
PS - 3B	110	60	43	65	89	10.3	5.0	240	3.0
PS - 3C								375	3.0
PS - 4A								260	3.0
PS - 4B	130	60	43	85	108	10.3	5.0	400	3.0
PS - 4C								600	3.0
PS - 5A								400	3.0
PS - 5B								610	3.0
PS - 5C	170	60	43	125	146	10.3	5.0	850	2.8
PS - 5D								1000	2.2
PS - 5D								1900	2.0

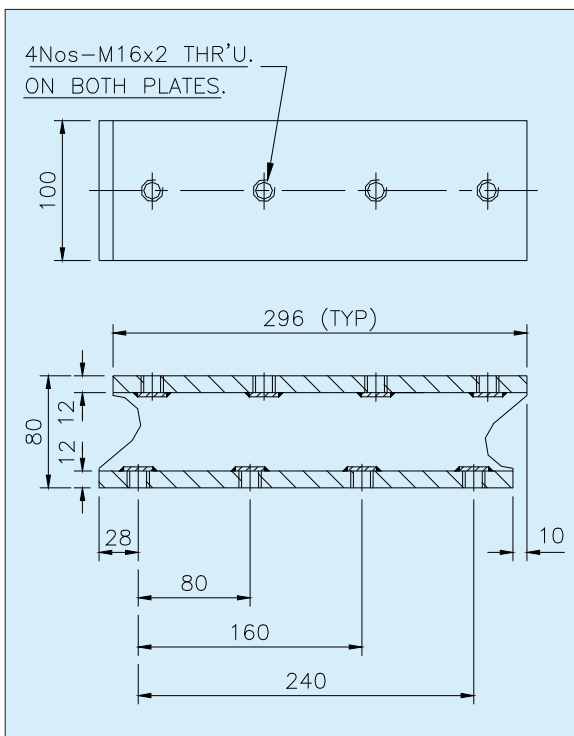
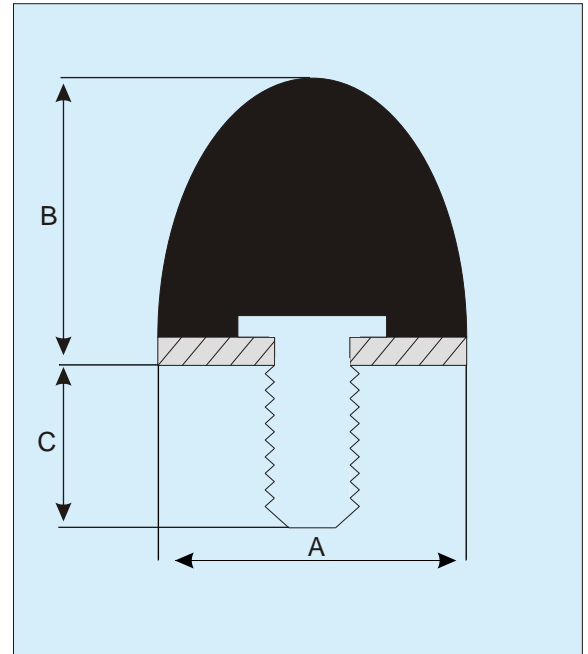
For Load Deflection Charts, Please See Page 36

AROFLEX POLYBOND

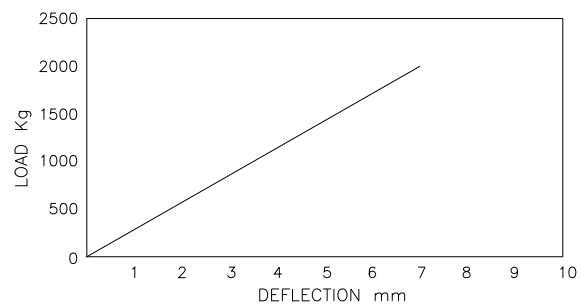
DOME SHAPED O MOUNTS & BO 80 SANDWICH MOUNT

DOME SHAPED O MOUNTS

Ref	A	B	C (Thread) Dia. Length
PO 108 x 95 Type 4	108	95	M12 x 30
PO 108 x 121 Type 4	108	121	M12 x 30



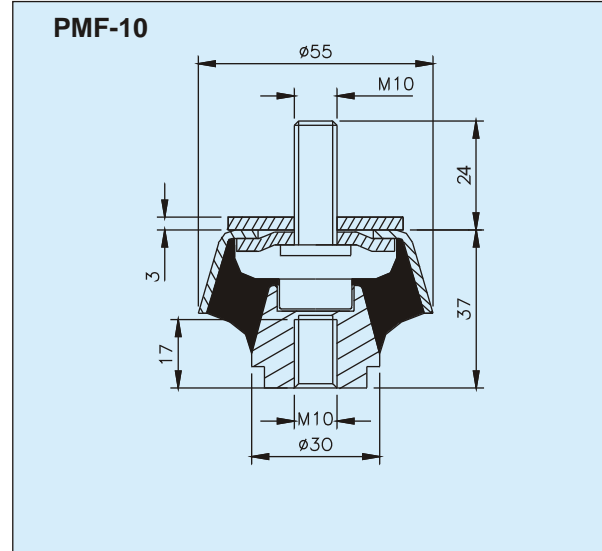
BO 80 SANDWICH MOUNT



PART NO.	MAX. LOAD (kg)	STATIC DEFL (mm)
BO 80	2000	7

AROFLEX POLYBOND

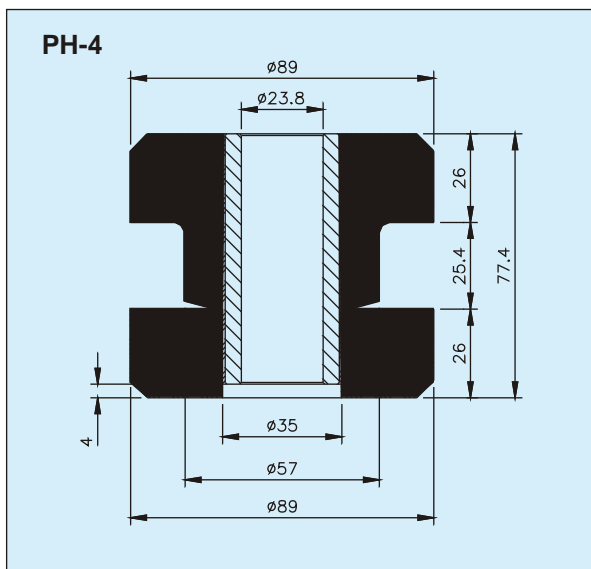
PMF TYPE MACHINE MOUNTS



PART NO.	COMP. LOAD (kg)	DEFLECTION (mm)
PMF - 10	A	32
	B	64
	C	113

ALL DIMENSIONS IN mm.

PH TYPE DUAL COMPRESSION MOUNTS

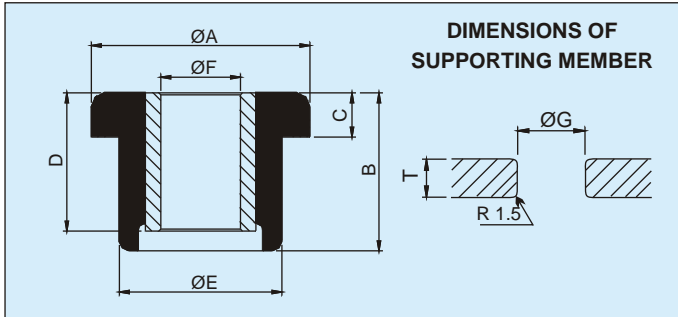


ALL DIMENSIONS IN mm.

PART NO.	AXIAL LOAD (kg)	RADIAL LOAD (kg)	DEFLECTION (mm)
PH - 4	A	122	2.5
	B	321	2.5
	C	350	2.5
	D	531	2.5
	E	954	2.5

AROFLEX POLYBOND

DC MOUNTS

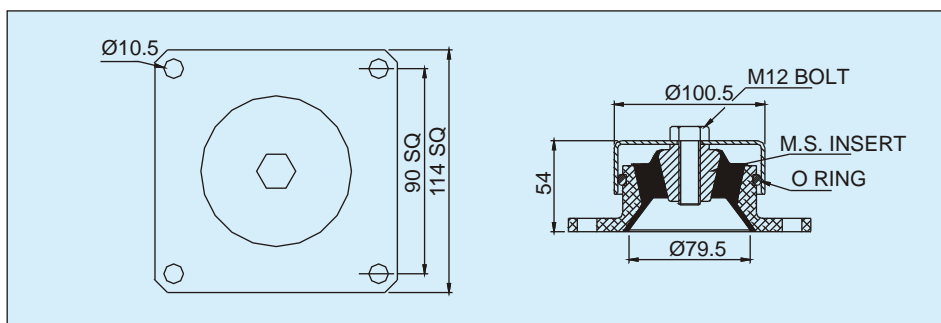


POLYBOND DUAL COMPRESSION (DC) mounts can withstand high static and shock loading to help isolate vibration, control shock, and reduce noise. These mounts are to be used with the right supporting member and snubbing washers.

All DIMENSIONS IN mm.

PART NO.	$\varnothing A$	B	C	D	$\varnothing E$	$\varnothing F$	$\varnothing G$	T	MAX AXIAL LOAD (kg)	DEFL
PDC 1	44.4	31.7	10.3	25.4	31.7	13.0	28.4	97.0	112.0	1.1
PDC 2	50.8	50.8	19.0	36.8	34.9	13.5	31.8	16.0	112.0	1.7
PDC 3	63.5	50.8	15.8	42.9	41.2	16.4	38.1	19.1	227.0	1.7
PDC 4	76.2	57.1	20.6	50.8	50.8	16.3	46.0	23.6	340.0	2.1
PDC 5	50.0	31.5	13.2	25.5	34.2	13.6	31.0	9.5	260.0	2.0

DOME MOUNTS



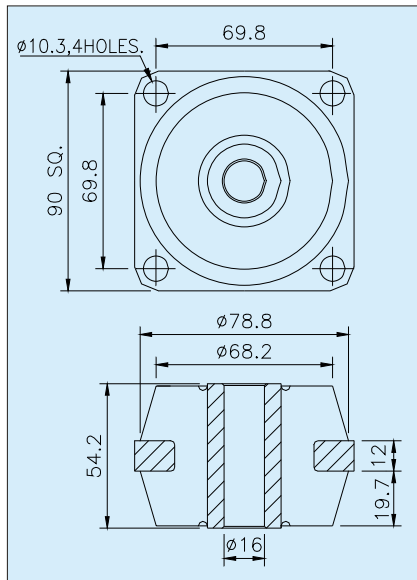
These are compact Shock mounts, designed to work in most severe conditions. The top cup and "O" ring protect the elastomer from surrounding environment. The aluminium base casting is sturdy and light weight. The mount ensures single degree working of the installed equipment.

All Dimensions in mm.

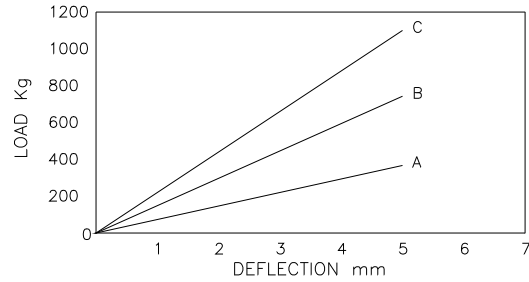
PART NO.	LOAD IN (kg)	STATIC DEFLECTION (mm)	COLOUR CODE
PTE	185	3.0	GREEN
PTC	400	3.0	RED

AROFLEX POLYBOND

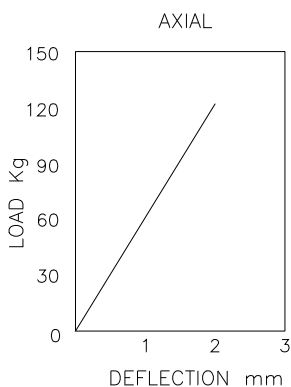
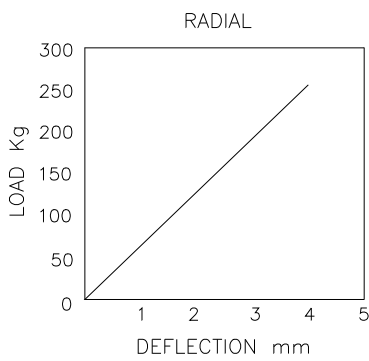
CAB MOUNTS P098 & P16053



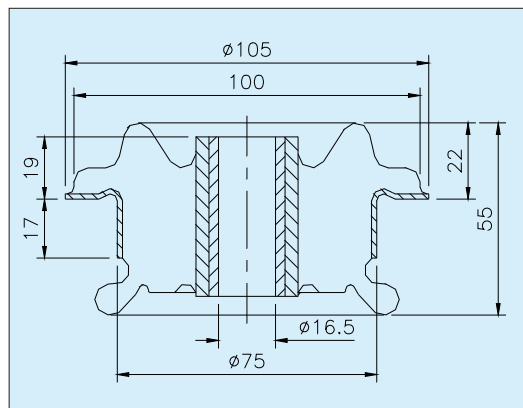
P 098 CAB MOUNT



PART NO.		MAX. LOAD (kg)	STATIC DEFL (mm)
P-098	A	370	5.0
	B	745	5.0
	C	1100	5.0



P 16053 CAB MOUNT

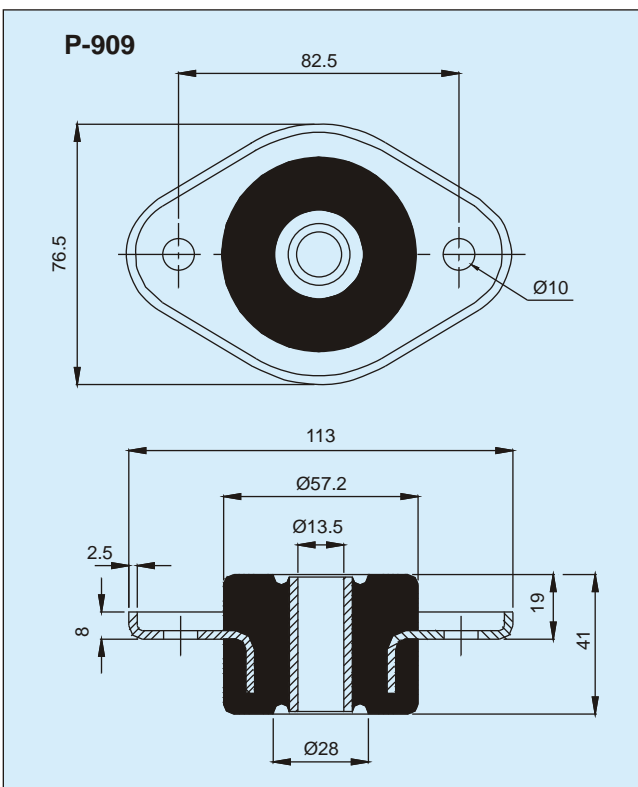
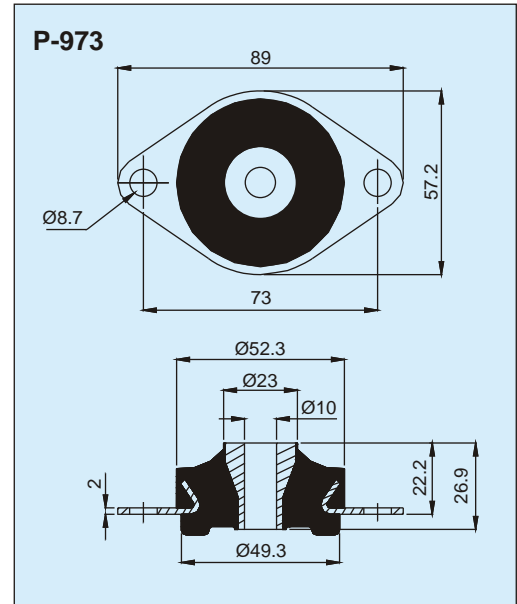


PART NO.		MAX. LOAD (kg)	STATIC DEFL (mm)
P-16053	AXIAL	122	2
	RADIAL	256	4

100 Ø mm Overload and Rebound Washers required

AROFLEX POLYBOND

CORE MOUNTS



POLYBOND Core mounts are designed so that the rubber works in both, shear, and compression. These mounts will work in most severe shock conditions when used with snubbing washers. The low profile, failsafe core mounts are used for a number of applications.

ALL DIMENSIONS IN mm.

PART NO.		LOAD (kg)	DEFLECTION (mm)
P - 973	A	30	3.1
	B	70	3.7
	C	100	3.4
P - 909	C	220	4.0

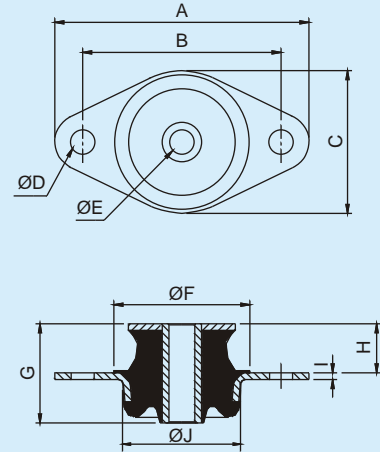
For Load Deflection Charts, Please See Page 40

AROFLEX POLYBOND

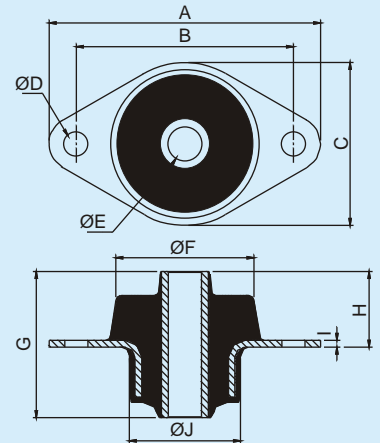
CORE MOUNTS



PSC1, PSC2



PSC3



PART NO.		MAX. LOAD AXIAL (kg)	DEFLECTION (mm)
PSC1	A	91	4.6
	B	114	4.6
	C	159	4.8
	D	182	4.6
	E	227	4.8
PSC2	A	364	5.1
	B	364	4.6
	C	455	4.6
	D	545	4.6
	E	636	4.6
PSC3	A	192	11.5
	B	312	6.9

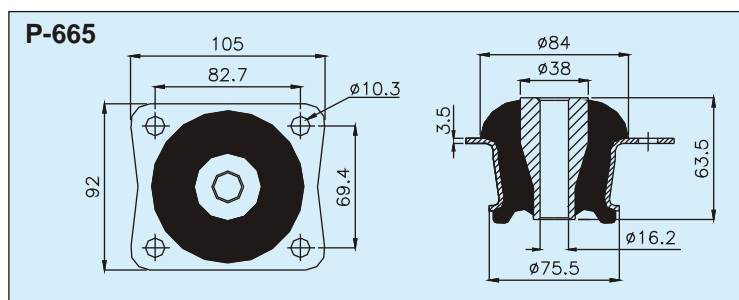
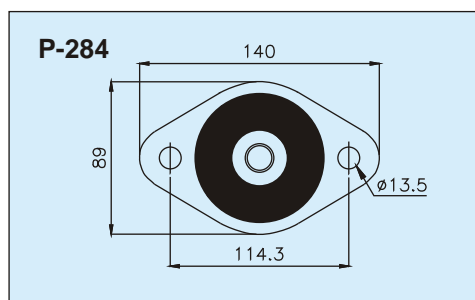
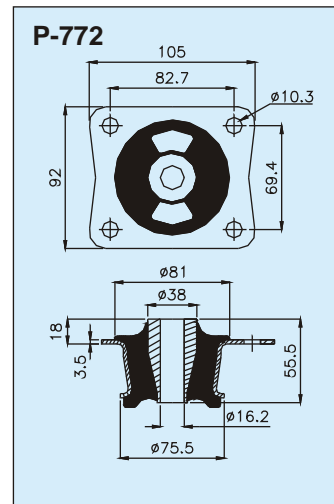
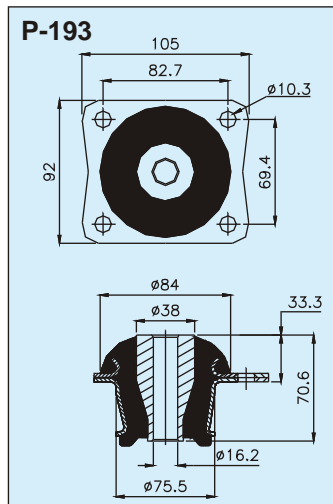
POLYBOND Core mounts are designed so that the rubber works in both, shear, and compression. These mounts will work in most severe shock conditions when used with snubbing washers. The low profile, failsafe core mounts are used for a number of applications.

PART NO.	DIMENSIONS (mm)									
	A	B	C	ØD	ØE	ØF	G	H	I	ØJ
PSC1	114	89	64	10.3	11.6	48	45	28	3	53
PSC2	133.3	108	82.5	10.3	17.5	70	57	30	3	57
PSC3	158	127	95	13.5	19.3	80.8	85.4	44.2	4	64.8

For Load Deflection Charts, Please See Page 40

AROFLEX POLYBOND

CORE MOUNTS



These core mounts when used with the right washers, provide a "fail-safe" feature, essential for many severe applications. Due to the high deflections possible these mounts provide good isolation and are extremely popular in mobile applications.

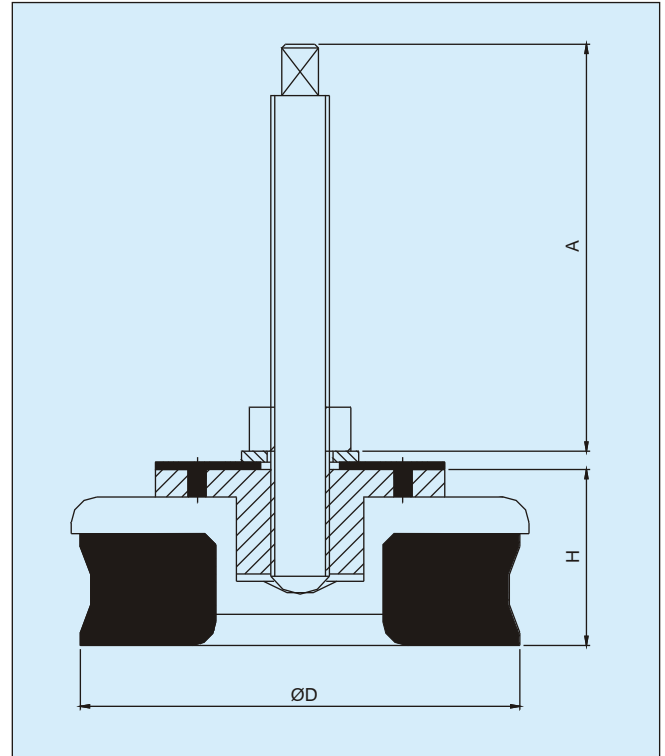
ALL DIMENSIONS IN mm.

PART NO.		LOAD (kg)	DEFLECTION (mm)
P - 193	A	250	6.0
	B	500	6.0
	C	600	4.8
P - 284	A	200	6.5
	B	350	5.4
	C	500	5.3
P - 665	A	200	6.5
	B	350	5.4
	C	500	5.3
P - 772	A	780	6.8
	B	200	5.5
	C	250	4.7

For Load Deflection Charts, Please See Page 40

AROFLEX POLYBOND

PM TYPE MACHINE MOUNTS



POLYBOND MACHINE MOUNTS are especially suited for mounting workshop machinery without being anchored to the ground. These ready-to-install mounts allow immediate commissioning, eliminating the need for foundations or grouting. The height adjustment feature allows precise levelling of machinery. POLYBOND MACHINE MOUNTS will provide excellent mobility of machinery layout in your workshop. These mounts will insulate high frequency vibrations and sound, and prevent wandering of machinery due to the large contact area.

DIMENSIONS (mm)	MACHINE MOUNT MODEL			
	PM - 1	PM - 2	PM - 3	PM - 4
A	75 (M12 x 1.25 P)	120 (M16 x 1.5 P)	115 (M16 x 1.5 P)	100 (M20 x 1.5 P)
	125 (M16 x 1.5 P)	135 (M20 x 1.5 P)	130 (M20 x 1.5 P)	140 (M24 x 2 P)
ØD	80	120	160	200
H	43 - 55	48 - 60	57 - 70	65 - 80

APPLICATIONS		LOADING IN KG.			
		PM - 1	PM - 2	PM - 3	PM - 4
MAX STATIC LOAD		600	1800	3000	5000
MACHINE TOOLS		400	1100	2100	3500
GRINDING M/C (ROTATING)		3500	900	1500	2500
GRINDING M/C (RECIPROCATING)		200	450	750	1300
LATHE		200	450	750	1300
MILLING M/C		200	450	750	1300
POWER PRESSES (STROKES / MIN)	200	120	250	700	1200
	160	140	300	900	1500
	125 AND LESS	200	430	1250	2200

AROFLEX POLYBOND

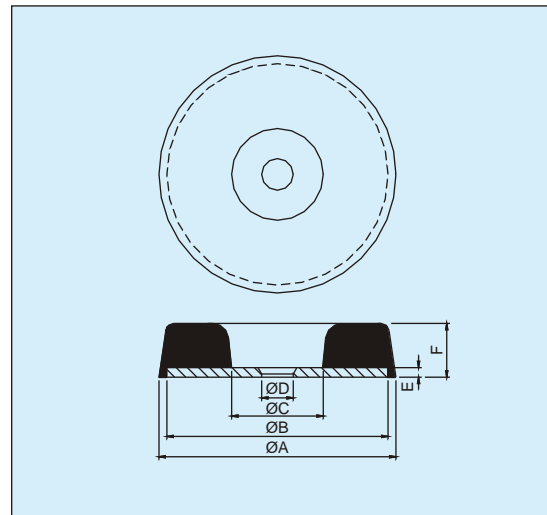
MACHINERY PADS



POLYBOND MACHINERY PADS can be used as a low-cost mounting material to eliminate vibrations, impact, shock and noise in machinery. These pads are available in a standard sizes and can be then cut to desired size using a knife or scissors.

PART NO.	STANDARD SIZE
PMP 1	500mm x 500mm x 10mm
PMP 2	450mm x 450mm x 7mm

BUFFERS



PART NO.	DIMENSIONS (mm)					
	ØA	ØB	ØC	ØD	E	F
PNB 75	55	49	18	8	2	15
PNB 750	114	100	40	30	4	28

Orders to be specified on hardness.

AROFLEX POLYBOND

OPEN SPRING MOUNTINGS



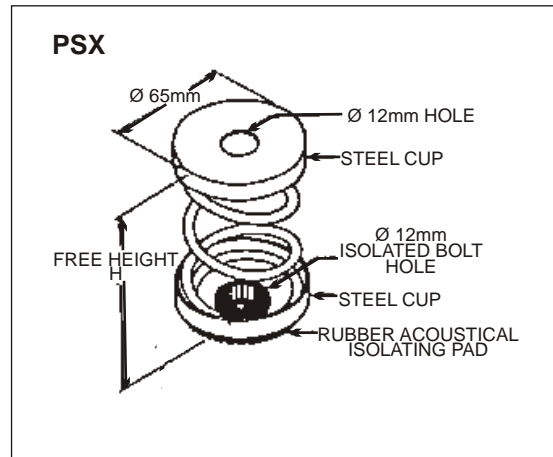
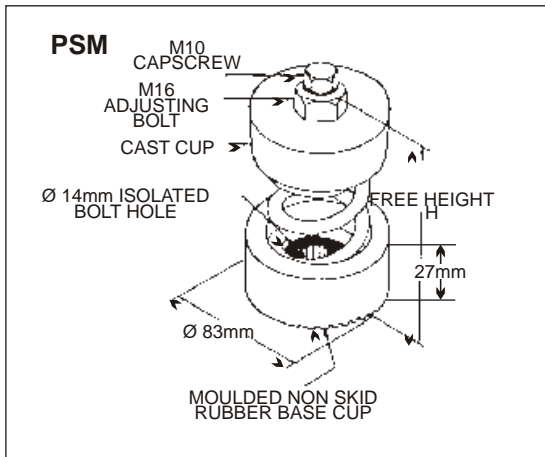
APPLICATION

Where an inexpensive spring hanger element is required for effective vibration isolation.

Typically used to support fans, pumps, compressors and packaged air-conditioners.

FEATURES

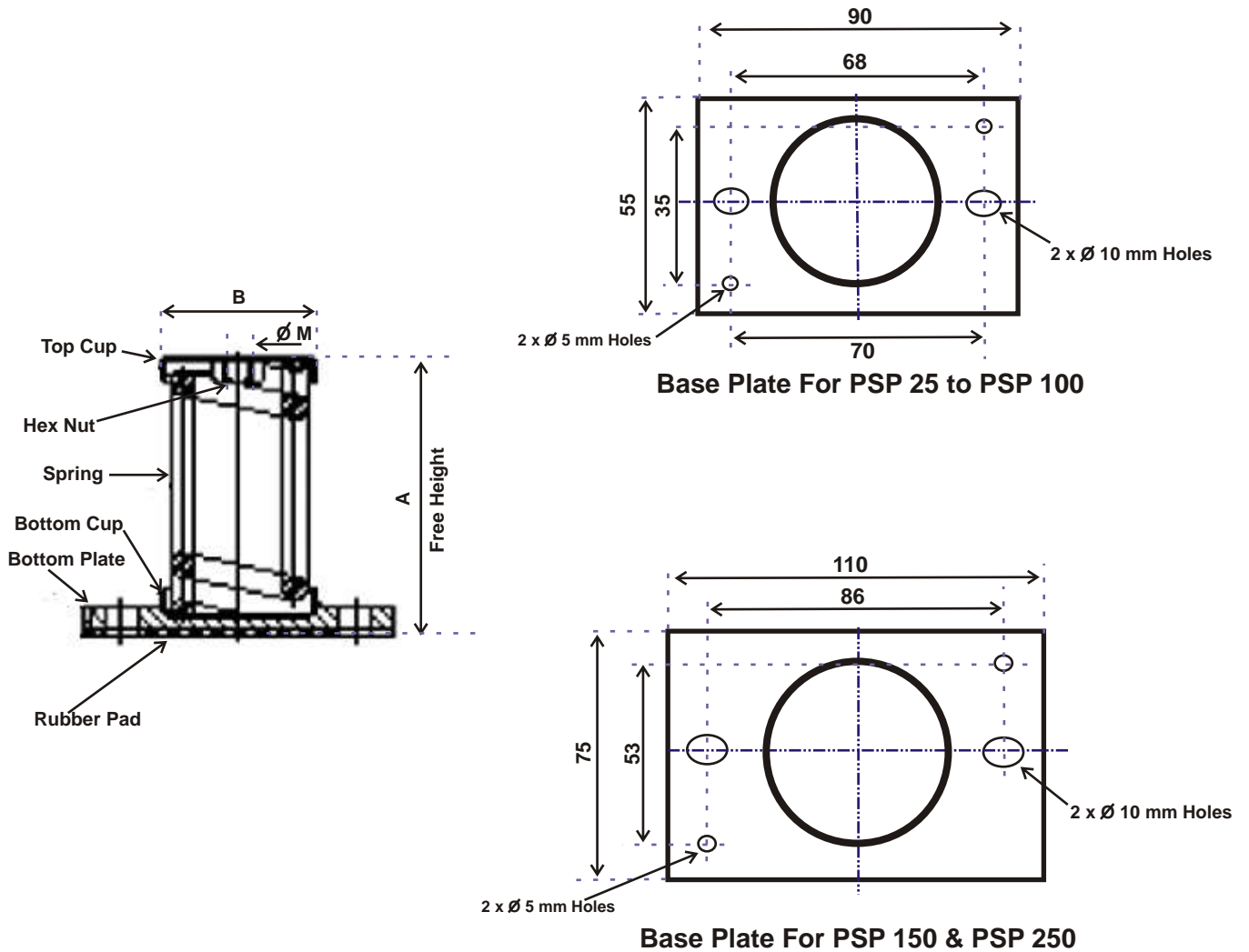
- Colour coded springs for visual identification of load range.
- Heavy duty stable steel spring.
- Bolt hole in base rubber isolated.
- Bonded acoustic rubber pad on base, type (PSX)
- Spring located by moulded rubber cup. type (PSM)
- Built in leveling bolt and locking cap screw supplied with type PSM
- Fully weatherproofed.



TYPE	MAX LOAD (kg)	STATIC DEFL. (mm)	SPRING CONST. (kg/mm)	FREE HEIGHT 'H' (mm)		H (mm)	
				SPRING	STRIPE		
PSM	89	10	40	0.25	WHITE	-	122
	90	20.0	38	0.53	DARK GREY	-	122
	91	35	35	1.0	DARK GREY	WHITE	122
	92	50	33	1.5	YELLOW	-	122
	93	100	33	3.0	BROWN	-	122
	94	150	30	5.0	BLUE	-	122
	95	200	30	6.7	BLACK	-	122
	96	250	28	8.9	RED	-	127
	97	300	28	10.7	GREEN	-	127
	98	400	25	16.0	GREY	-	127
	99	550	23	23.9	ORANGE	-	133
PSX	9	10	33	0.30	YELLOW	-	81
	10	15	33	0.45	BROWN	-	81
	11	30	33	0.9	BLUE	-	81
	12	50	28	1.8	BLACK	-	81
	13	75	25	3.0	RED	-	81
	14	125	25	5.0	GREEN	-	81
	16	175	20	8.8	GREY	-	81
	17	200	15	13.3	ORANGE	-	81

AROFLEX POLYBOND

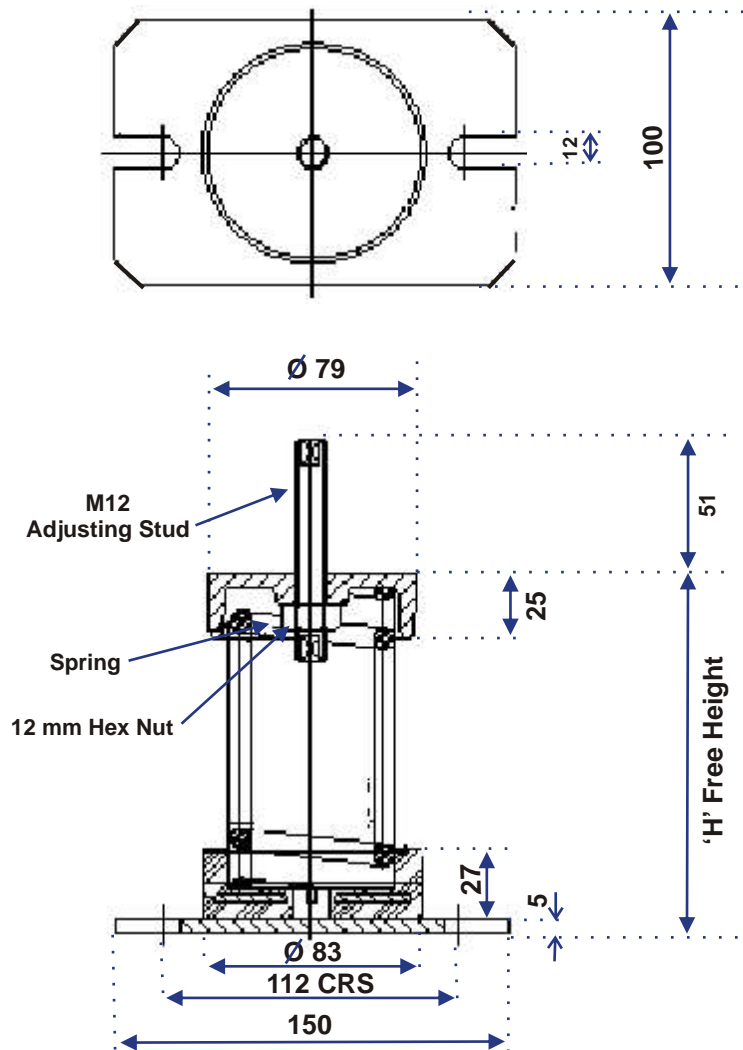
PSP TYPE BASE PLATE SPRING MOUNT



SR No	Part No	Load K.G.		Defln. Max mm	Spring Colour	A	B Ø	Thread Size
		Min	Max					
1	PSP 25	12	25	20	GREEN	80	45	M8
2	PSP 50	25	50	20	WHITE	80	45	M8
3	PSP 75	40	75	20	BLUE	80	45	M8
4	PSP 100	60	100	20	RED	80	45	M8
5	PSP 150	100	150	30	BLACK	120	55	M12
6	PSP 250	165	250	30	PLAIN	120	55	M12

AROFLEX POLYBOND

PSMP TYPE BASE PLATE SPRING MOUNT



SR No	Part No	Max. Load Kg	Defln. in mm	Spring Colours		H (mm)
				Spring	Stripe	
1	PSMP-89	10	40	WHITE	-	130
2	PSMP-90	20	38	DARK GREY	-	
3	PSMP-91	35	35	DARK GREY	WHITE	
4	PSMP-92	50	33	YELLOW	-	
5	PSMP-93	100	33	BROWN	-	
6	PSMP-94	150	30	BLUE	-	
7	PSMP-95	200	30	BLACK	-	
8	PSMP-96	250	28	RED	-	
9	PSMP 97	300	28	GREEN	-	
10	PSMP 98	400	25	GREY	-	

AROFLEX POLYBOND

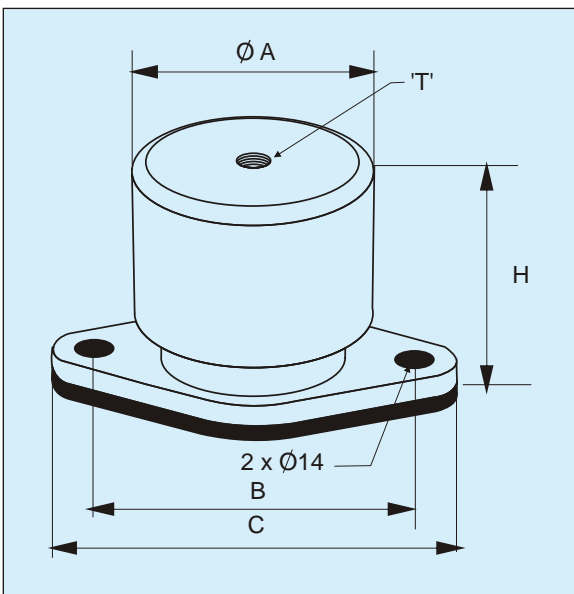
ENCLOSED SPRING MOUNTS



This series of spring mounts are high-deflection mounts of special construction. Unlike regular spring mounts. It also incorporates a special damping feature to ensure that resonance amplification during engine start-up and shut-down is minimized.

The Advantage

- Anti-Corrosion All Aluminium Body totally encloses all internal elements
- Fail-safe construction
- Direction-free installation
- High Damping Design (critical damping minimum 15%)
- Horizontal Snubbing Design restricts lateral movement, stability without affecting isolation efficiency
- Superior interlocking arrangement between top and base

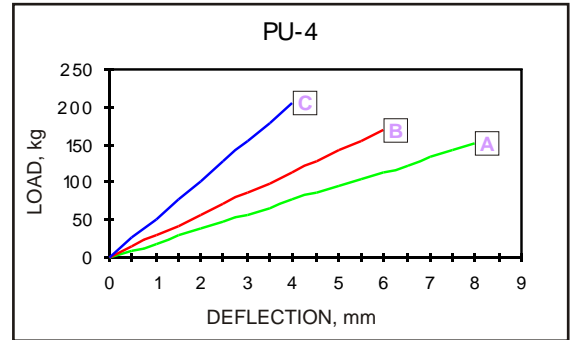
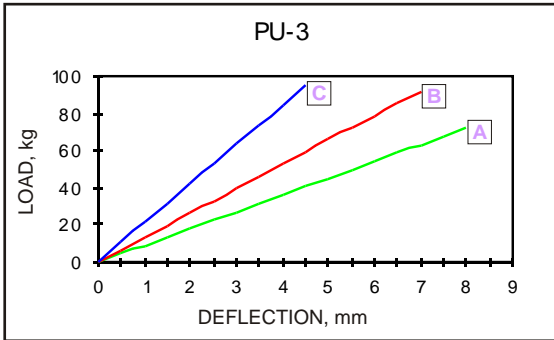
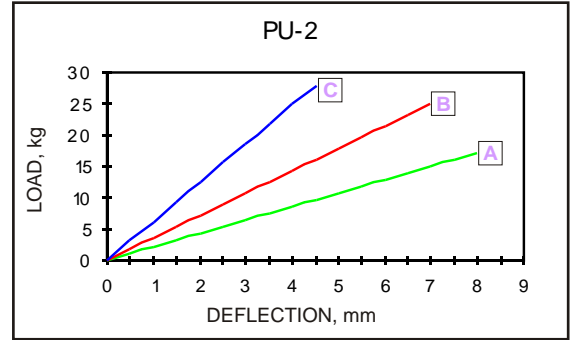
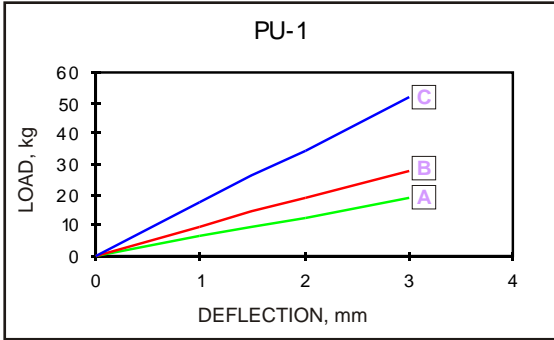


Size	Dimensions in mm					Max Load (kg)	Rated Deflection (mm)	Rated Isolation Efficiency
	A	B	C	H	T			
DNM-200	85	115	145	93	M12	200	16	95%
DNM-315	85	115	145	93	M12	315	16	95%
DMN-400	115.6	144	174	129	M16	400	28	97%
DNM-600	115.6	144	174	129	M16	600	19	96%
DNM-800	115.6	144	174	129	M16	800	16	95%
DNM-1000	115.6	144	174	129	M16	1000	15	95%

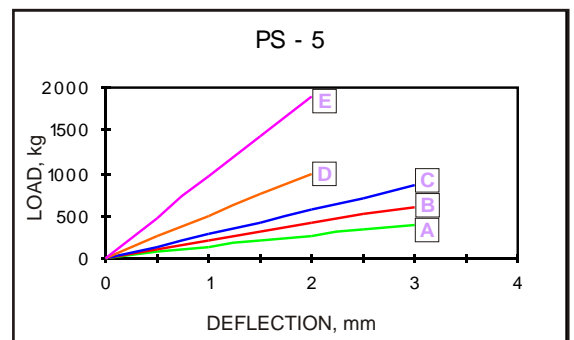
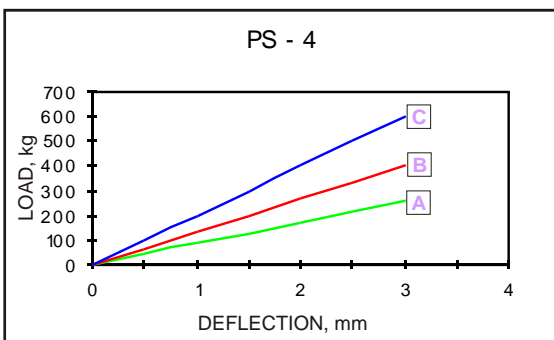
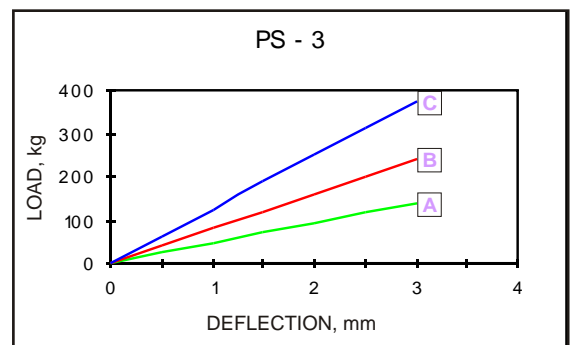
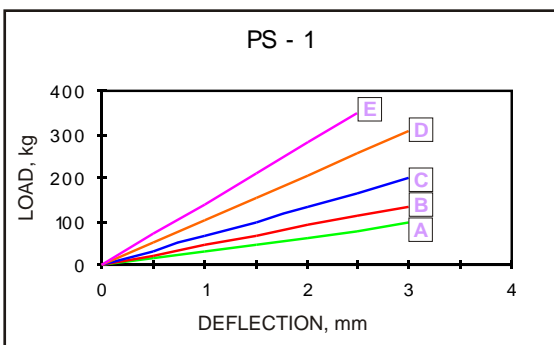
AROFLEX POLYBOND

LOAD DEFLECTIONS

DOUBLE 'U' SHEAR MOUNTS - PAGE 10



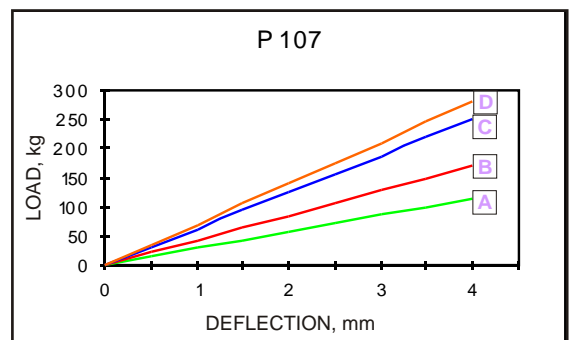
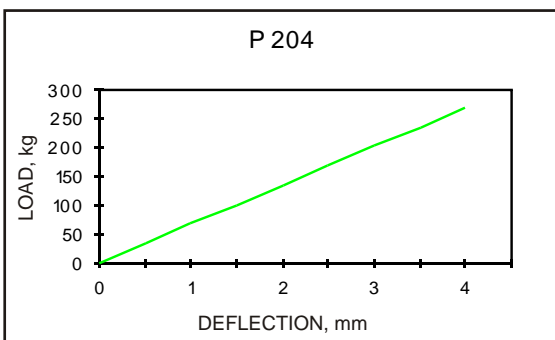
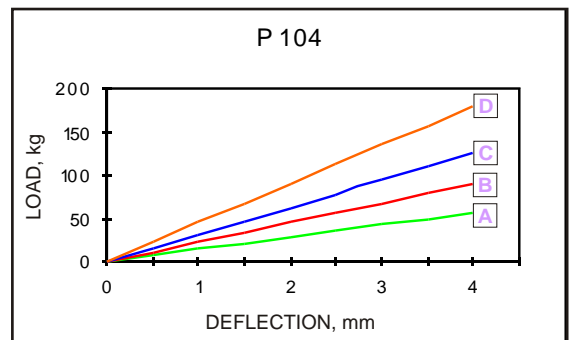
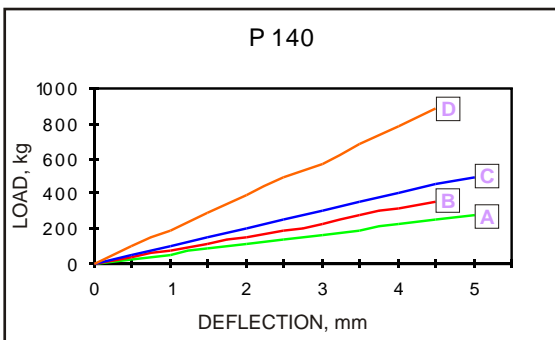
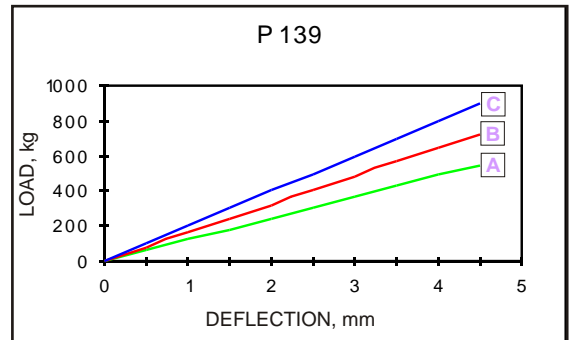
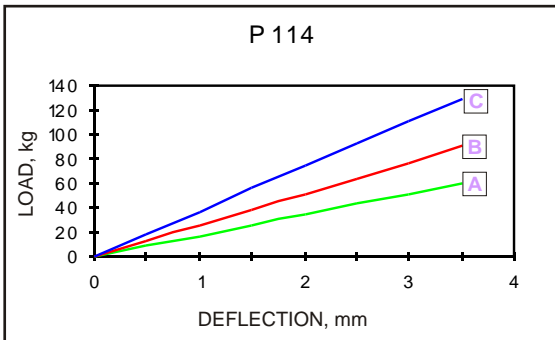
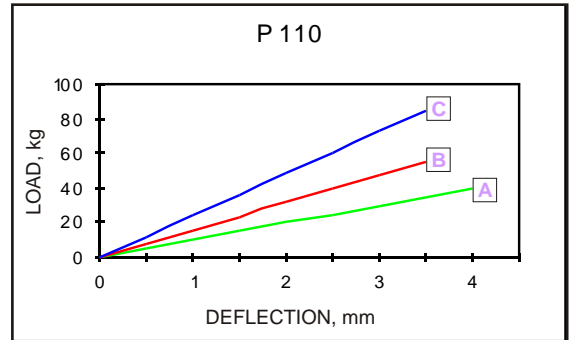
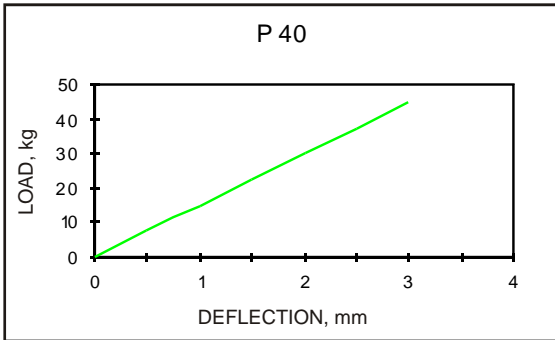
SANDWICH MOUNTS - PAGE 22



AROFLEX POLYBOND

LOAD DEFLECTIONS

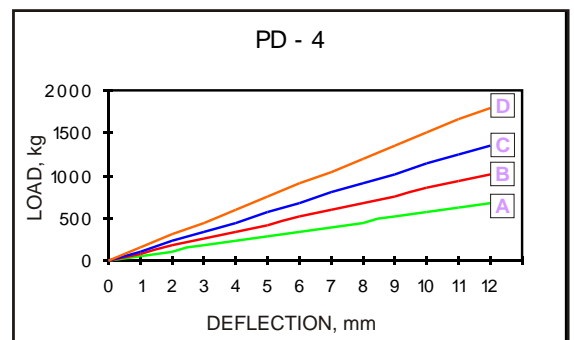
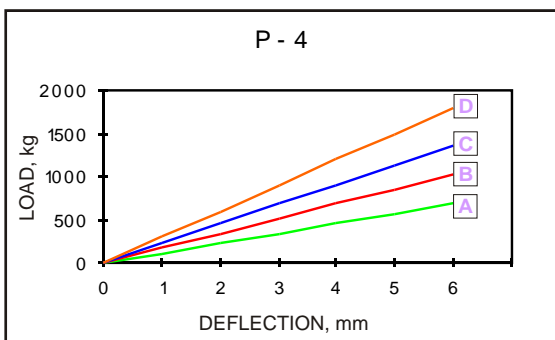
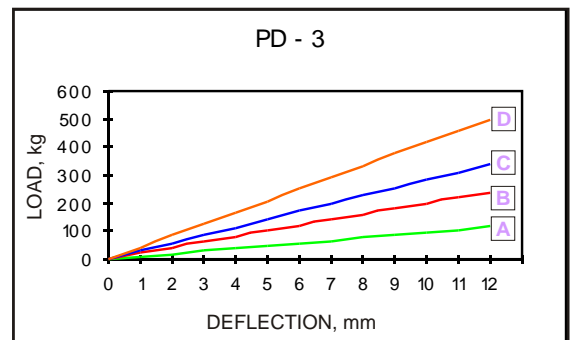
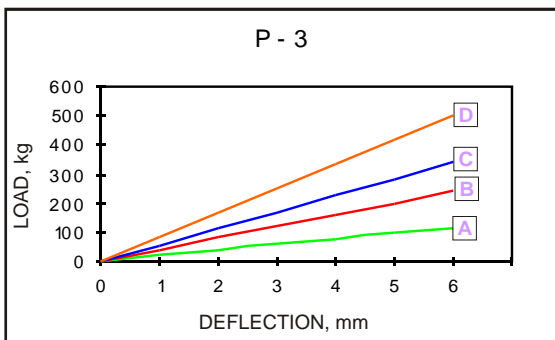
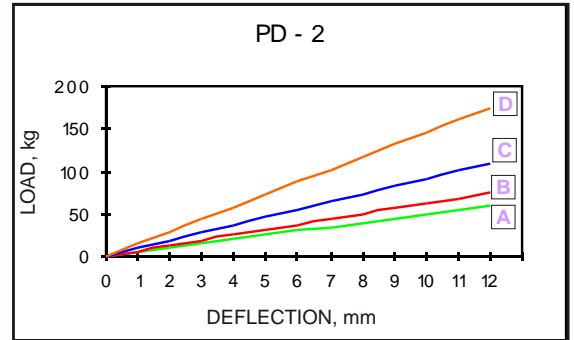
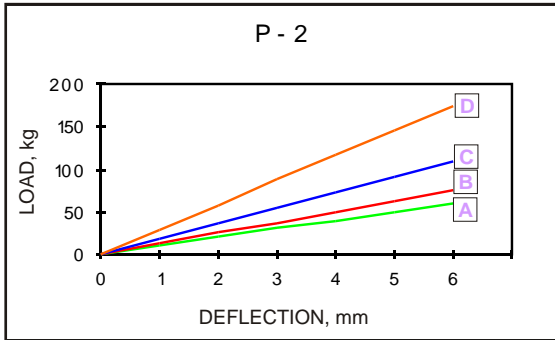
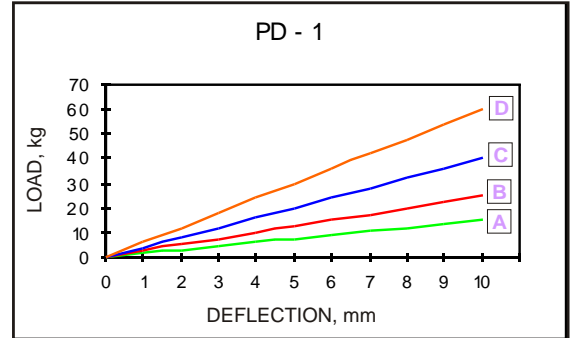
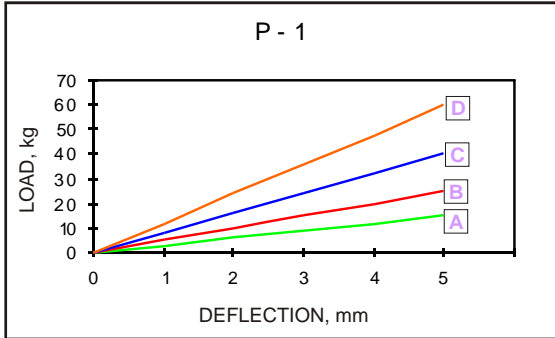
MACHINERY ISOLATORS - PAGE 11



AROFLEX POLYBOND

LOAD DEFLECTIONS

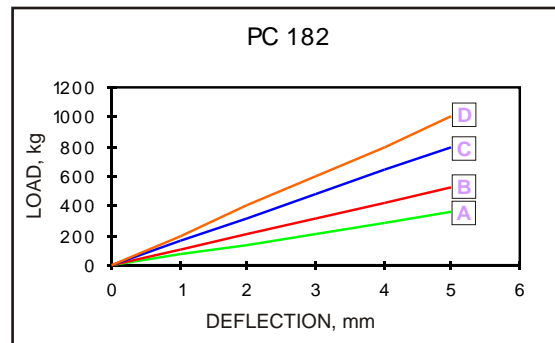
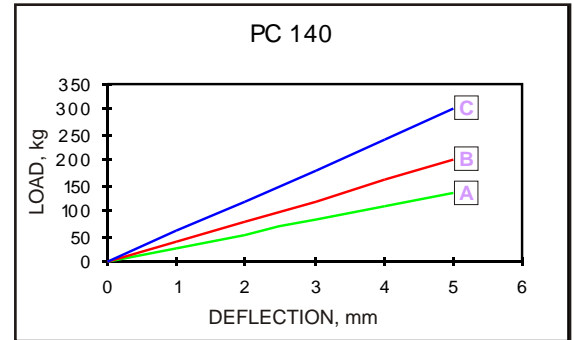
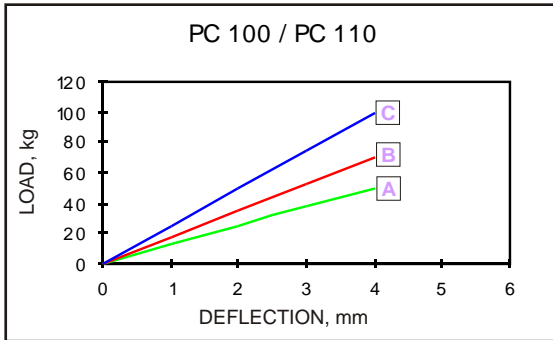
P MOUNTS - PAGE 14



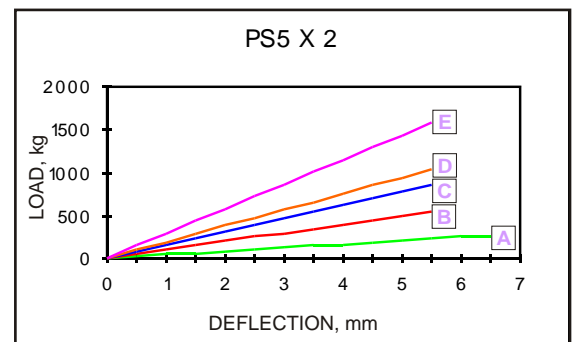
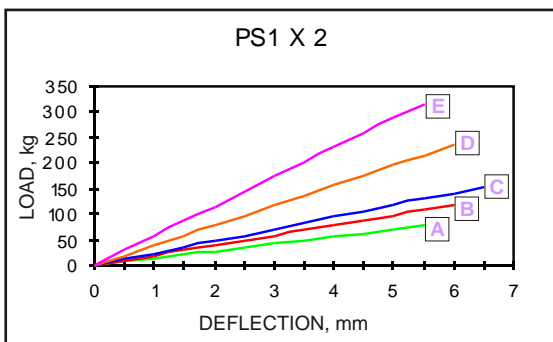
AROFLEX POLYBOND

LOAD DEFLECTIONS

PC COMBI MOUNTS - PAGE 17



PS COMBI MOUNTS - PAGE 18



AROFLEX POLYBOND

LOAD DEFLECTIONS

CORE MOUNTS - PAGE 27 to 29

